

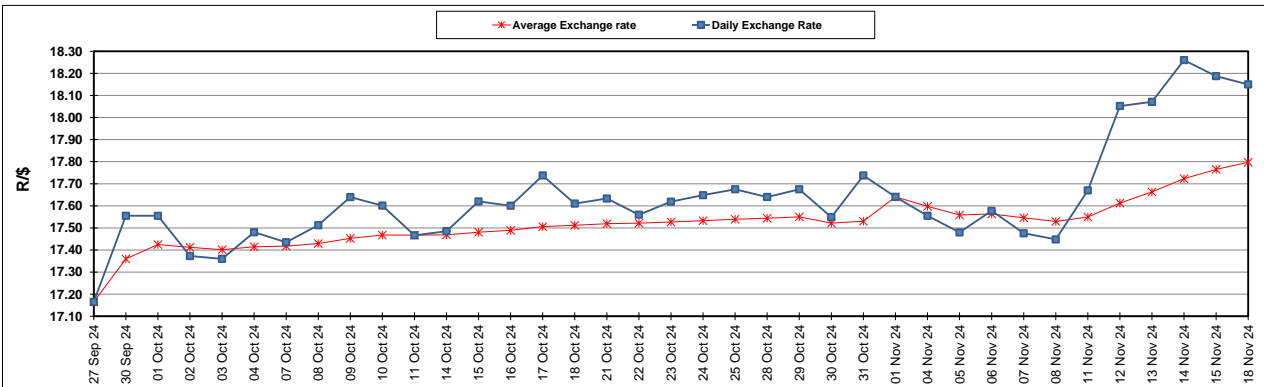
South African Cents per Litre (SA c/l)	PETROL 95 ULP	PETROL 93 ULP & LRP	DIESEL 0.05%	DIESEL 0.005%	ILL. PAR.
GAUTENG PUMP PRICE AS FROM 06/11/2024	2,130.000	2,098.000	-	-	-
WHOLESALE PRICE AS FROM 06/11/2024	-	-	1,866.170	1,876.570	1,286.938
SINGLE NATIONAL MAXIMUM RETAIL PRICE AS FROM 06/11/2024	-	-	-	-	1,636.000
BASIC FUEL PRICE - 18/11/2024	1,019.734	972.574	1,082.986	1,093.775	1,075.365
PRESS RELEASE CONTRIBUTION TO BFP 06/11/2024 - 18/11/2024	1,014.070	982.070	1,032.630	1,043.030	1,033.128
UNIT OVER/(UNDER) RECOVERY - 18/11/2024	(5.664)	9.496	(50.356)	(50.745)	(42.237)
AVERAGE BASIC FUEL PRICE 01/11/2024 - 18/11/2024	1,004.193	960.654	1,067.773	1,076.907	1,067.245
AVERAGE UNIT OVER/(UNDER) RECOVERY 01/11/2024 - 18/11/2024	3.627	15.167	(40.393)	(38.877)	(39.367)

ANALYSIS MOVEMENT OF AVERAGE OVER/(UNDER) RECOVERY

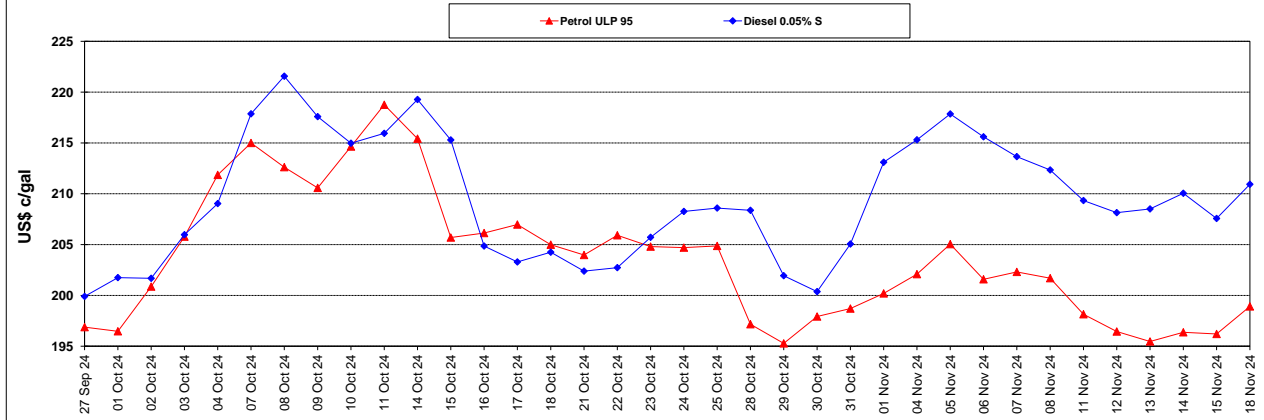
	PETROL 95	PETROL 93	DIESEL 0.05%	DIESEL 0.005%	ILL. PAR.
- MOVEMENT IN INTERNATIONAL PRODUCT PRICES	18.703	29.589	(24.362)	(22.709)	(23.344)
- MOVEMENT IN EXCHANGE RATE	(15.076)	(14.423)	(16.031)	(16.168)	(16.023)
AVERAGE UNIT OVER/(UNDER) RECOVERY 01/11/2024 - 18/11/2024	3.627	15.167	(40.393)	(38.877)	(39.367)

R/\$ EXCHANGE RATE - (R/\$18.1500 - 18/11/2024)

EXCHANGE RATE USED IN BASIC FUEL PRICE



INTERNATIONAL PRODUCT PRICES OF BASKET USED IN BASIC FUEL PRICE



BASIC FUEL PRICE IN SA CENTS PER LITRE

