

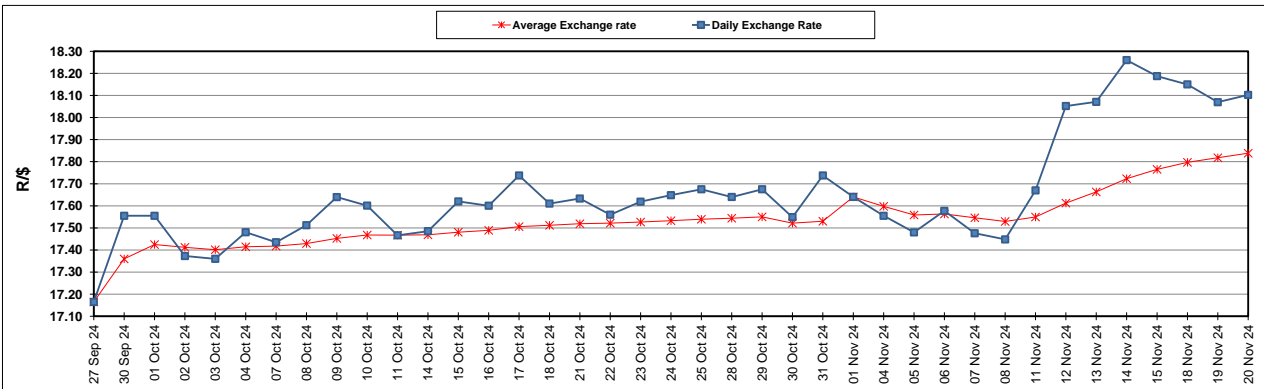
South African Cents per Litre (SA c/l)	PETROL 95 ULP	PETROL 93 ULP & LRP	DIESEL 0.05%	DIESEL 0.005%	ILL. PAR.
GAUTENG PUMP PRICE AS FROM 06/11/2024	2,130.000	2,098.000	-	-	-
WHOLESALE PRICE AS FROM 06/11/2024	-	-	1,866.170	1,876.570	1,286.938
SINGLE NATIONAL MAXIMUM RETAIL PRICE AS FROM 06/11/2024	-	-	-	-	1,636.000
BASIC FUEL PRICE - 20/11/2024	1,035.230	988.430	1,092.559	1,108.683	1,082.076
PRESS RELEASE CONTRIBUTION TO BFP 06/11/2024 - 20/11/2024	1,014.070	982.070	1,032.630	1,043.030	1,033.128
UNIT OVER/(UNDER) RECOVERY - 20/11/2024	(21.160)	(6.360)	(59.929)	(65.653)	(48.948)
AVERAGE BASIC FUEL PRICE 01/11/2024 - 20/11/2024	1,007.942	963.942	1,071.656	1,081.455	1,069.734
AVERAGE UNIT OVER/(UNDER) RECOVERY 01/11/2024 - 20/11/2024	0.771	12.771	(43.526)	(42.711)	(41.106)

### ANALYSIS MOVEMENT OF AVERAGE OVER/(UNDER) RECOVERY

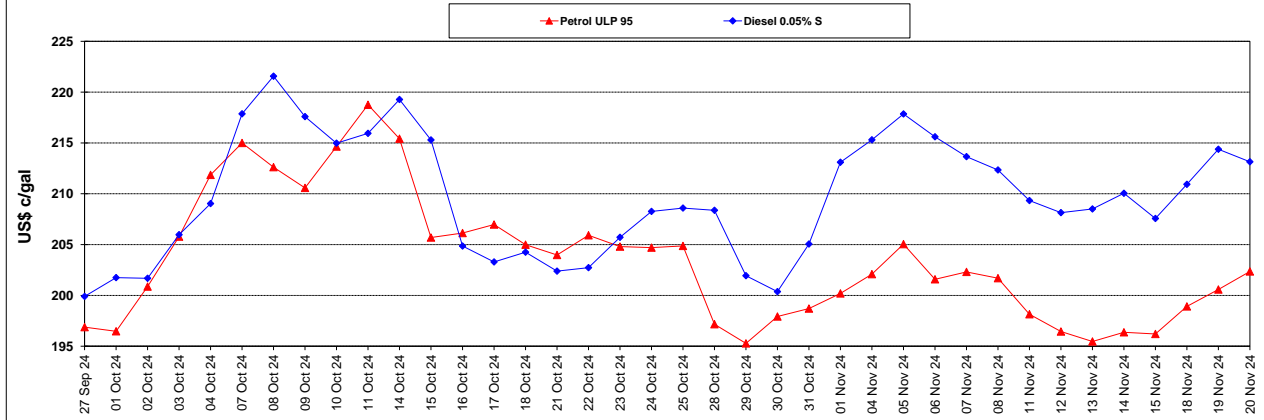
	PETROL 95	PETROL 93	DIESEL 0.05%	DIESEL 0.005%	ILL. PAR.
- MOVEMENT IN INTERNATIONAL PRODUCT PRICES	18.197	29.436	(24.999)	(24.014)	(22.612)
- MOVEMENT IN EXCHANGE RATE	(17.426)	(16.665)	(18.527)	(18.697)	(18.494)
AVERAGE UNIT OVER/(UNDER) RECOVERY 01/11/2024 - 20/11/2024	0.771	12.771	(43.526)	(42.712)	(41.106)

### R/\$ EXCHANGE RATE - (R/\$18.1025 - 20/11/2024)

### EXCHANGE RATE USED IN BASIC FUEL PRICE



### INTERNATIONAL PRODUCT PRICES OF BASKET USED IN BASIC FUEL PRICE



### BASIC FUEL PRICE IN SA CENTS PER LITRE

