

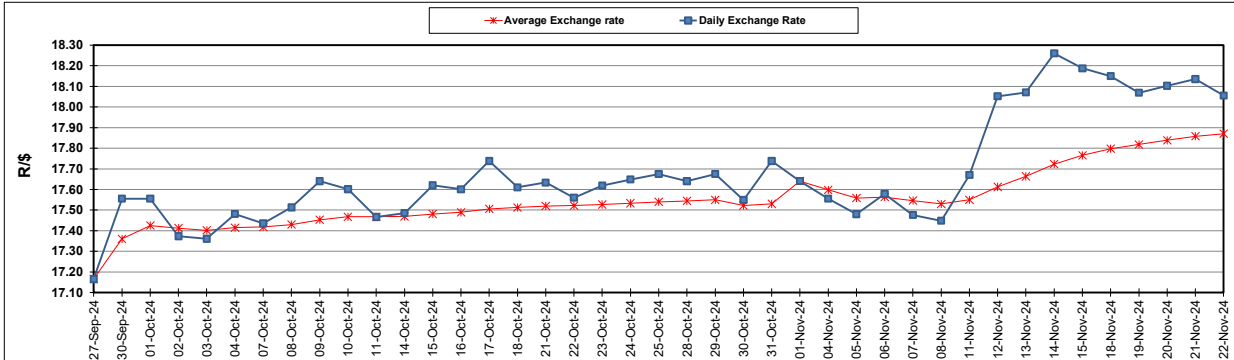
South African Cents per Litre (SA c/l)	PETROL 95 ULP	PETROL 93 ULP & LRP	DIESEL 0.05%	DIESEL 0.005%	ILL. PAR.
GAUTENG PUMP PRICE AS FROM 06/11/2024	2,130.000	2,098.000	-	-	-
WHOLESALE PRICE AS FROM 06/11/2024	-	-	1,866.170	1,876.570	1,286.938
SINGLE NATIONAL MAXIMUM RETAIL PRICE AS FROM 06/11/2024	-	-	-	-	1,636.000
BASIC FUEL PRICE - 22/11/2024	1,038.620	994.834	1,105.572	1,122.364	1,093.386
PRESS RELEASE CONTRIBUTION TO BFP 06/11/2024 - 22/11/2024	1,014.070	982.070	1,032.630	1,043.030	1,033.128
UNIT OVER/(UNDER) RECOVERY - 22/11/2024	(24.550)	(12.764)	(72.942)	(79.334)	(60.258)
AVERAGE BASIC FUEL PRICE 01/11/2024 - 22/11/2024	1,011.507	967.521	1,075.609	1,086.282	1,072.482
AVERAGE UNIT OVER/(UNDER) RECOVERY 01/11/2024 - 22/11/2024	(2.124)	9.862	(46.916)	(47.002)	(43.291)

ANALYSIS MOVEMENT OF AVERAGE OVER/(UNDER) RECOVERY

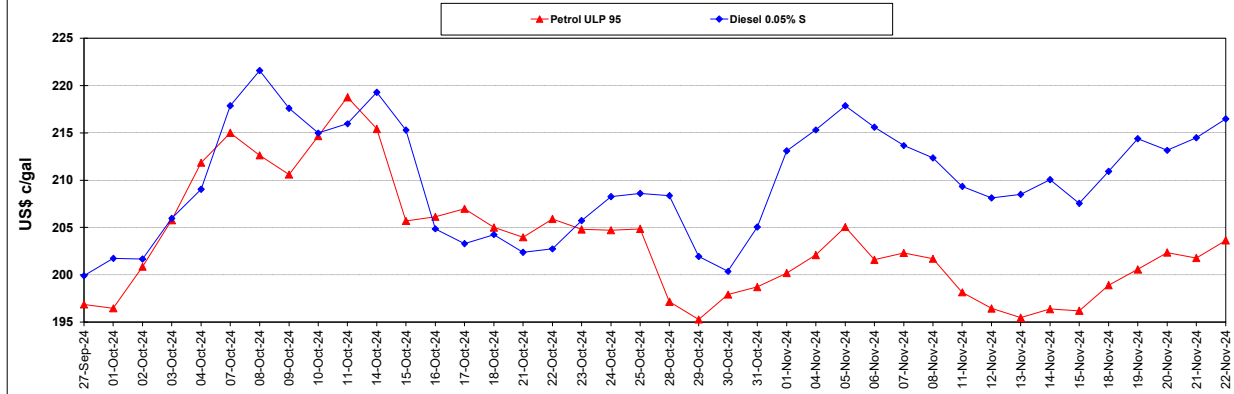
	PETROL 95	PETROL 93	DIESEL 0.05%	DIESEL 0.005%	ILL. PAR.
- MOVEMENT IN INTERNATIONAL PRODUCT PRICES	17.149	28.297	(26.422)	(26.304)	(22.856)
- MOVEMENT IN EXCHANGE RATE	(19.273)	(18.435)	(20.494)	(20.698)	(20.435)
AVERAGE UNIT OVER/(UNDER) RECOVERY 01/11/2024 - 22/11/2024	(2.124)	9.862	(46.916)	(47.002)	(43.291)

R/\$ EXCHANGE RATE - (R/\$18.0555 - 22/11/2024)

EXCHANGE RATE USED IN BASIC FUEL PRICE



INTERNATIONAL PRODUCT PRICES OF BASKET USED IN BASIC FUEL PRICE



BASIC FUEL PRICE IN SA CENTS PER LITRE

