

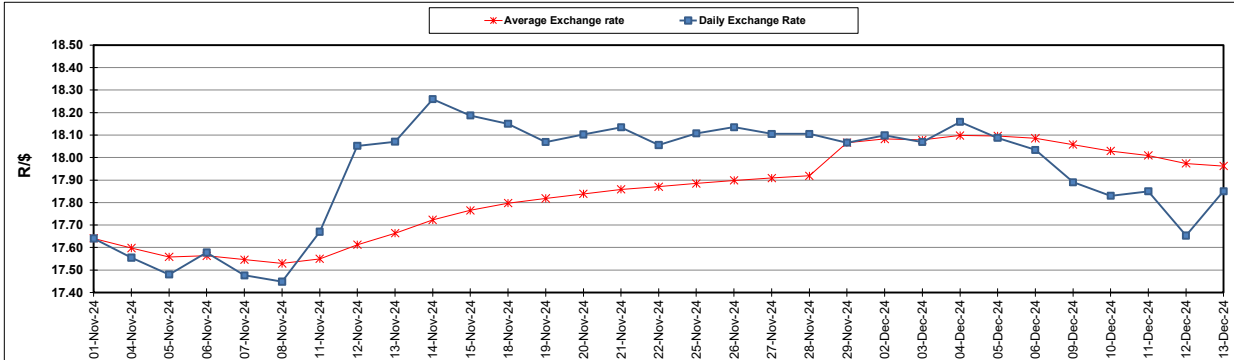
South African Cents per Litre (SA c/l)	PETROL 95 ULP	PETROL 93 ULP & LRP	DIESEL 0.05%	DIESEL 0.005%	ILL. PAR.
GAUTENG PUMP PRICE AS FROM 04/12/2024	2,147.000	2,115.000	-	-	-
WHOLESALE PRICE AS FROM 04/12/2024	-	-	1,921.050	1,932.450	1,335.818
SINGLE NATIONAL MAXIMUM RETAIL PRICE AS FROM 04/12/2024	-	-	-	-	1,702.000
BASIC FUEL PRICE - 13/12/2024	1,040.876	1,015.668	1,086.577	1,100.506	1,067.833
PRESS RELEASE CONTRIBUTION TO BFP 04/12/2024 - 13/12/2024	1,015.670	983.670	1,078.630	1,090.030	1,073.128
UNIT OVER/(UNDER) RECOVERY - 13/12/2024	(25.206)	(31.998)	(7.947)	(10.476)	5.295
AVERAGE BASIC FUEL PRICE 29/11/2024 - 13/12/2024	1,017.060	992.277	1,061.938	1,075.866	1,048.222
AVERAGE UNIT OVER/(UNDER) RECOVERY 29/11/2024 - 13/12/2024	(1.826)	(9.043)	4.147	1.346	13.997

### ANALYSIS MOVEMENT OF AVERAGE OVER/(UNDER) RECOVERY

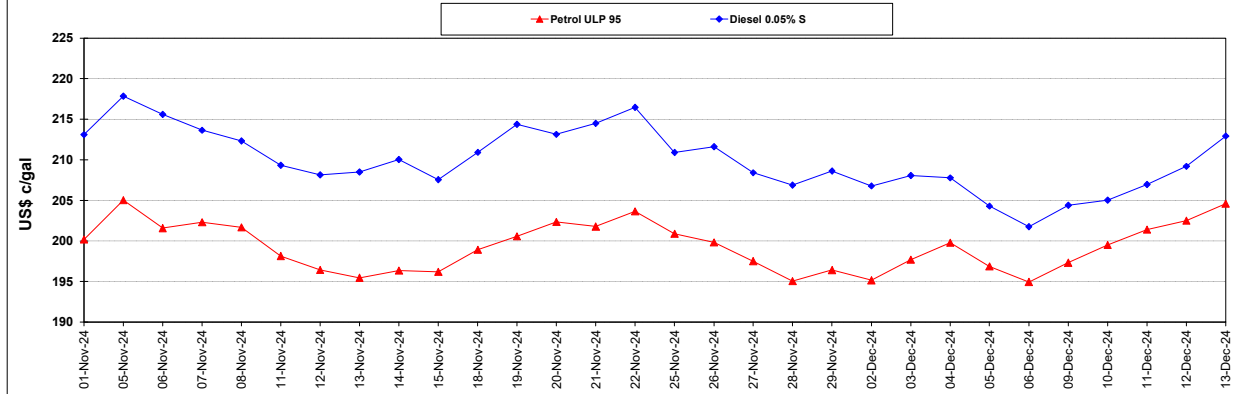
	PETROL 95	PETROL 93	DIESEL 0.05%	DIESEL 0.005%	ILL. PAR.
- MOVEMENT IN INTERNATIONAL PRODUCT PRICES	0.269	(6.999)	6.334	3.562	16.156
- MOVEMENT IN EXCHANGE RATE	(2.095)	(2.044)	(2.187)	(2.216)	(2.159)
AVERAGE UNIT OVER/(UNDER) RECOVERY 29/11/2024 - 13/12/2024	(1.826)	(9.043)	4.147	1.346	13.997

### R/\$ EXCHANGE RATE - (R/\$17.8505 - 13/12/2024)

#### EXCHANGE RATE USED IN BASIC FUEL PRICE



#### INTERNATIONAL PRODUCT PRICES OF BASKET USED IN BASIC FUEL PRICE



#### BASIC FUEL PRICE IN SA CENTS PER LITRE

