

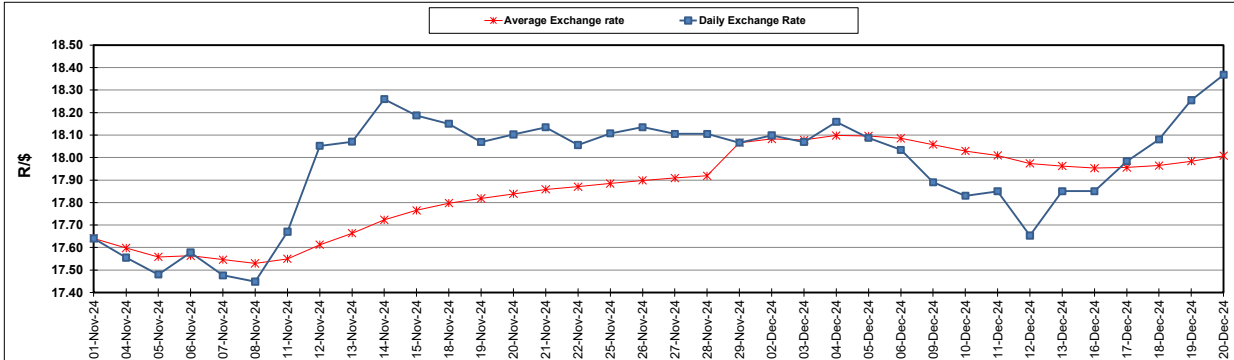
South African Cents per Litre (SA c/l)	PETROL 95 ULP	PETROL 93 ULP & LRP	DIESEL 0.05%	DIESEL 0.005%	ILL. PAR.
GAUTENG PUMP PRICE AS FROM 04/12/2024	2,147.000	2,115.000	-	-	-
WHOLESALE PRICE AS FROM 04/12/2024	-	-	1,921.050	1,932.450	1,335.818
SINGLE NATIONAL MAXIMUM RETAIL PRICE AS FROM 04/12/2024	-	-	-	-	1,702.000
BASIC FUEL PRICE - 20/12/2024	1,037.874	1,011.936	1,103.238	1,117.332	1,070.585
PRESS RELEASE CONTRIBUTION TO BFP 04/12/2024 - 20/12/2024	1,015.670	983.670	1,078.630	1,090.030	1,073.128
UNIT OVER/(UNDER) RECOVERY - 20/12/2024	(22.204)	(28.266)	(24.608)	(27.302)	2.543
AVERAGE BASIC FUEL PRICE 29/11/2024 - 20/12/2024	1,022.222	997.191	1,072.333	1,086.451	1,054.580
AVERAGE UNIT OVER/(UNDER) RECOVERY 29/11/2024 - 20/12/2024	(6.852)	(13.821)	(2.328)	(5.233)	11.048

ANALYSIS MOVEMENT OF AVERAGE OVER/(UNDER) RECOVERY

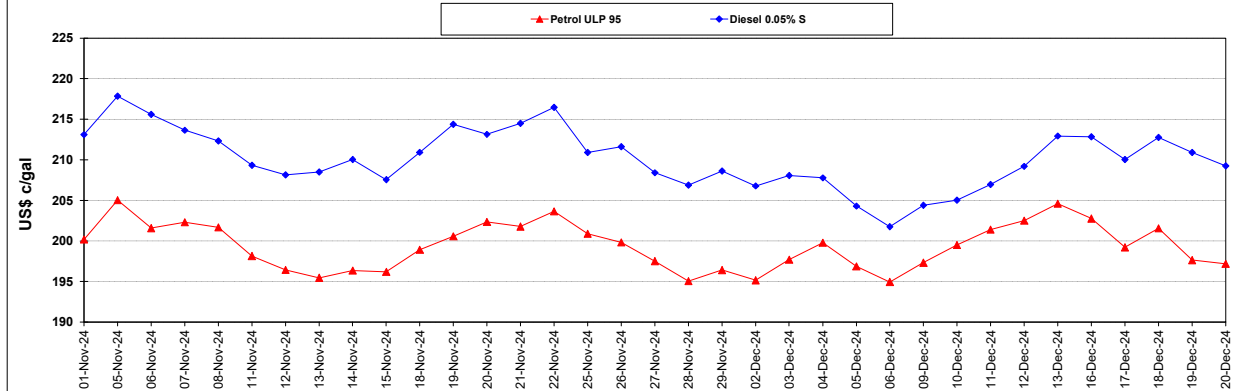
	PETROL 95	PETROL 93	DIESEL 0.05%	DIESEL 0.005%	ILL. PAR.
- MOVEMENT IN INTERNATIONAL PRODUCT PRICES	(2.186)	(9.269)	2.567	(0.274)	15.862
- MOVEMENT IN EXCHANGE RATE	(4.666)	(4.552)	(4.895)	(4.959)	(4.814)
AVERAGE UNIT OVER/(UNDER) RECOVERY 29/11/2024 - 20/12/2024	(6.852)	(13.821)	(2.328)	(5.233)	11.048

R/\$ EXCHANGE RATE - (R/\$18.3678 - 20/12/2024)

EXCHANGE RATE USED IN BASIC FUEL PRICE



INTERNATIONAL PRODUCT PRICES OF BASKET USED IN BASIC FUEL PRICE



BASIC FUEL PRICE IN SA CENTS PER LITRE

