

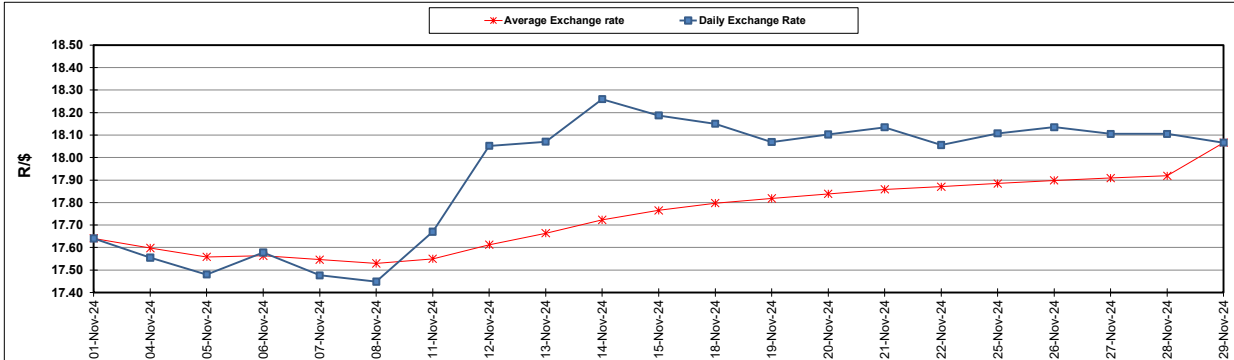
South African Cents per Litre (SA c/l)	PETROL 95 ULP	PETROL 93 ULP & LRP	DIESEL 0.05%	DIESEL 0.005%	ILL. PAR.
GAUTENG PUMP PRICE AS FROM 04/12/2024	2,147.000	2,115.000	-	-	-
WHOLESALE PRICE AS FROM 04/12/2024	-	-	1,921.050	1,932.450	1,335.818
SINGLE NATIONAL MAXIMUM RETAIL PRICE AS FROM 04/12/2024	-	-	-	-	1,702.000
BASIC FUEL PRICE - 29/11/2024	1,007.722	980.310	1,071.972	1,086.912	1,059.522
PRESS RELEASE CONTRIBUTION TO BFP 29/11/2024 - 29/11/2024	1,014.070	982.070	1,032.630	1,043.030	1,033.128
UNIT OVER/(UNDER) RECOVERY - 29/11/2024	6.348	1.760	(39.342)	(43.882)	(26.394)
AVERAGE BASIC FUEL PRICE 29/11/2024 - 29/11/2024	1,007.722	980.310	1,071.972	1,086.912	1,059.522
AVERAGE UNIT OVER/(UNDER) RECOVERY 29/11/2024 - 29/11/2024	6.348	1.760	(39.342)	(43.882)	(26.394)

ANALYSIS MOVEMENT OF AVERAGE OVER/(UNDER) RECOVERY

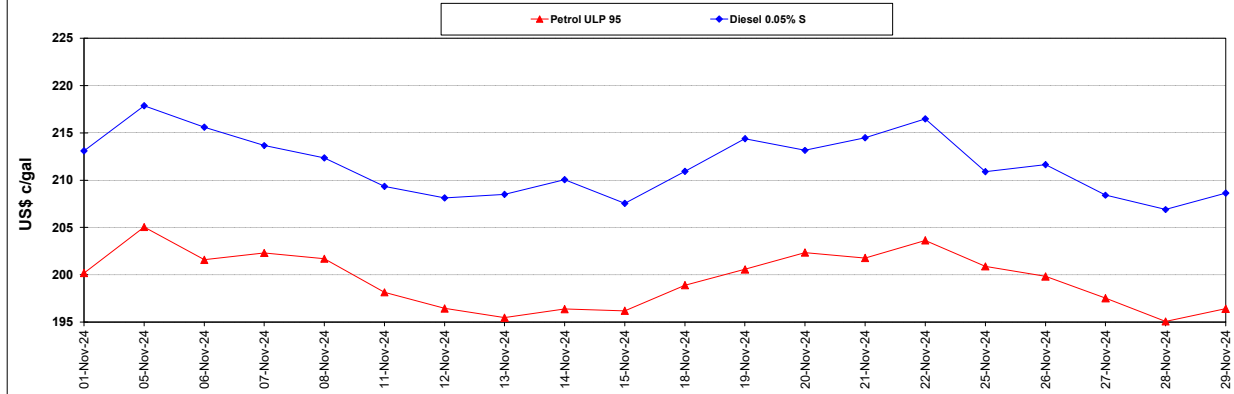
	PETROL 95	PETROL 93	DIESEL 0.05%	DIESEL 0.005%	ILL. PAR.
- MOVEMENT IN INTERNATIONAL PRODUCT PRICES	14.207	9.405	(30.982)	(35.405)	(18.131)
- MOVEMENT IN EXCHANGE RATE	(7.859)	(7.645)	(8.360)	(8.477)	(8.263)
AVERAGE UNIT OVER/(UNDER) RECOVERY 29/11/2024 - 29/11/2024	6.348	1.760	(39.342)	(43.882)	(26.394)

R/\$ EXCHANGE RATE - (R/\$18.0665 - 29/11/2024)

EXCHANGE RATE USED IN BASIC FUEL PRICE



INTERNATIONAL PRODUCT PRICES OF BASKET USED IN BASIC FUEL PRICE



BASIC FUEL PRICE IN SA CENTS PER LITRE

