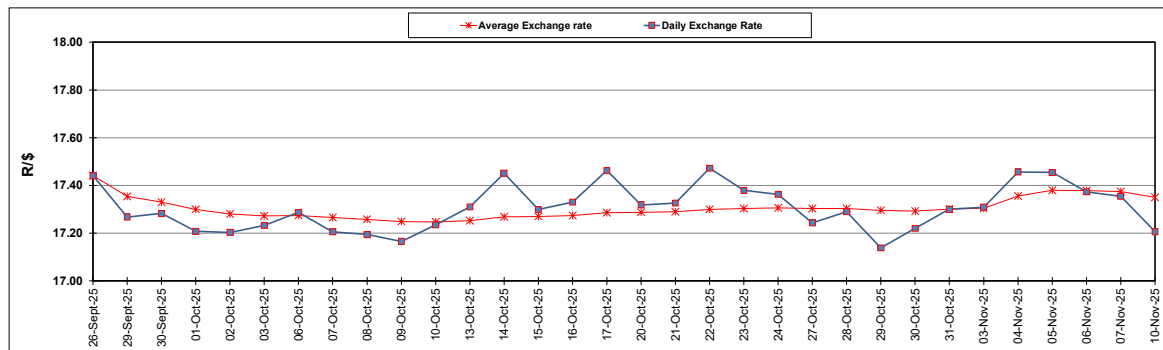


South African Cents per Litre (SA c/l)	PETROL 95 ULP	PETROL 93 ULP & LRP	DIESEL 0.05%	DIESEL 0.005%	ILL. PAR.
GAUTENG PUMP PRICE AS FROM 05/11/2025	2,112.000	2,097.000	-	-	-
WHOLESALE PRICE AS FROM 05/11/2025	-	-	1,913.350	1,919.750	1,298.618
SINGLE NATIONAL MAXIMUM RETAIL PRICE AS FROM 05/11/2025	-	-	-	-	1,647.000
BASIC FUEL PRICE - 31/10/2025	987.826	968.113	1,122.783	1,143.470	1,104.078
PRESS RELEASE CONTRIBUTION TO BFP 05/11/2025 - 10/11/2025	951.770	936.770	1,049.630	1,056.030	1,034.128
UNIT OVER/(UNDER) RECOVERY - 31/10/2025	(36.056)	(31.343)	(73.153)	(87.440)	(69.950)
AVERAGE BASIC FUEL PRICE 31/10/2025 - 10/11/2025	982.204	962.108	1,123.747	1,142.408	1,105.814
AVERAGE UNIT OVER/(UNDER) RECOVERY 31/10/2025 - 10/11/2025	(8.577)	(3.481)	(65.117)	(78.235)	(71.257)

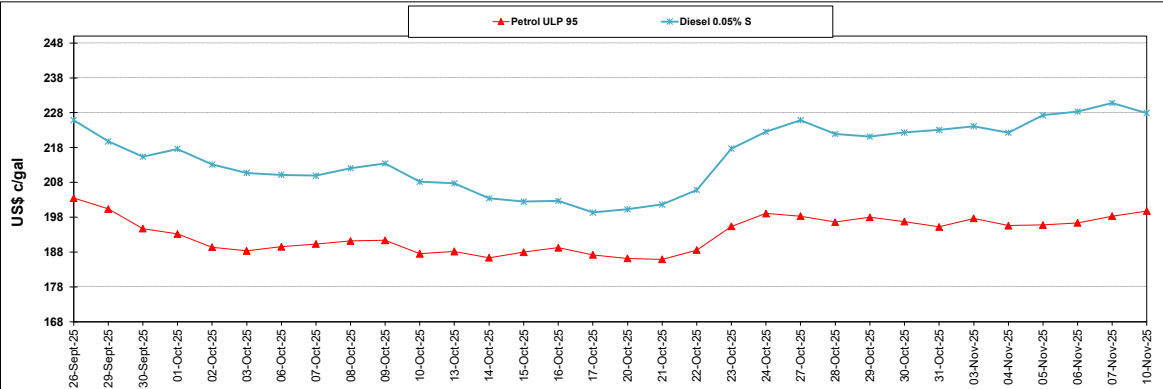
ANALYSIS MOVEMENT OF AVERAGE OVER/(UNDER) RECOVERY					
	PETROL 95	PETROL 93	DIESEL 0.05%	DIESEL 0.005%	ILL. PAR.
- MOVEMENT IN INTERNATIONAL PRODUCT PRICES	(5.316)	(0.287)	(61.386)	(74.442)	(67.586)
- MOVEMENT IN EXCHANGE RATE	(3.261)	(3.194)	(3.731)	(3.793)	(3.671)
AVERAGE UNIT OVER/(UNDER) RECOVERY 31/10/2025 - 10/11/2025	(8.577)	(3.481)	(65.117)	(78.235)	(71.257)

R/\$ EXCHANGE RATE - (R/\$17.2063 - 10/11/2025)

EXCHANGE RATE USED IN BASIC FUEL PRICE



INTERNATIONAL PRODUCT PRICES OF BASKET USED IN BASIC FUEL PRICE



BASIC FUEL PRICE IN SA CENTS PER LITRE

