

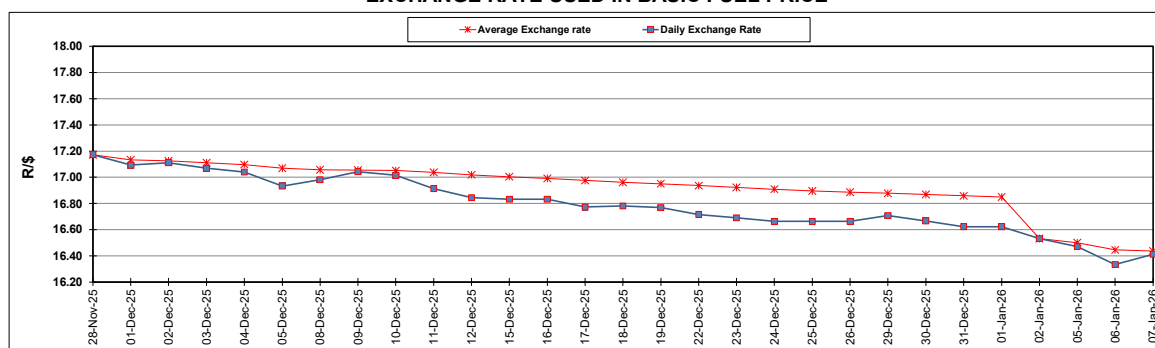
South African Cents per Litre (SA c/l)	PETROL 95 ULP	PETROL 93 ULP & LRP	DIESEL 0.05%	DIESEL 0.005%	ILL. PAR.
GAUTENG PUMP PRICE AS FROM 07/01/2026	2,075.000	2,064.000	-	-	-
WHOLESALE PRICE AS FROM 07/01/2026	-	-	1,841.830	1,852.230	1,263.098
SINGLE NATIONAL MAXIMUM RETAIL PRICE AS FROM 07/01/2026	-	-	-	-	1,598.000
BASIC FUEL PRICE - 07/01/2026	825.985	818.938	893.176	897.222	928.050
PRESS RELEASE CONTRIBUTION TO BFP 07/01/2026 - 07/01/2026	911.170	900.170	972.630	983.030	993.128
UNIT OVER/(UNDER) RECOVERY - 07/01/2026	85.185	81.232	79.454	85.808	65.078
AVERAGE BASIC FUEL PRICE 02/01/2026 - 07/01/2026	835.315	827.443	907.295	911.426	931.785
AVERAGE UNIT OVER/(UNDER) RECOVERY 02/01/2026 - 07/01/2026	125.355	119.227	168.085	184.104	143.843

### ANALYSIS MOVEMENT OF AVERAGE OVER/(UNDER) RECOVERY

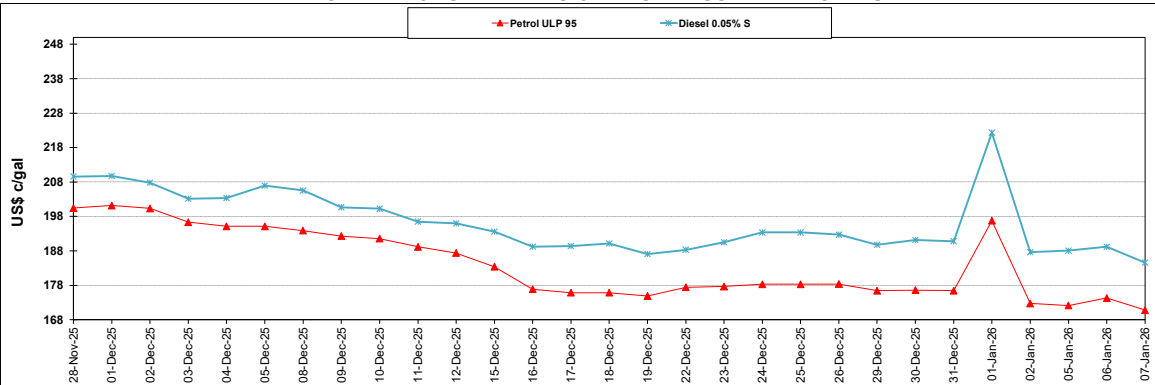
	PETROL 95	PETROL 93	DIESEL 0.05%	DIESEL 0.005%	ILL. PAR.
- MOVEMENT IN INTERNATIONAL PRODUCT PRICES	104.448	98.517	145.377	161.292	120.522
- MOVEMENT IN EXCHANGE RATE	20.907	20.710	22.708	22.812	23.321
AVERAGE UNIT OVER/(UNDER) RECOVERY 02/01/2026 - 07/01/2026	125.355	119.227	168.085	184.104	143.843

R/\$ EXCHANGE RATE - (R/\$16.4125 - 07/01/2026)

### EXCHANGE RATE USED IN BASIC FUEL PRICE



### INTERNATIONAL PRODUCT PRICES OF BASKET USED IN BASIC FUEL PRICE



### BASIC FUEL PRICE IN SA CENTS PER LITRE

