

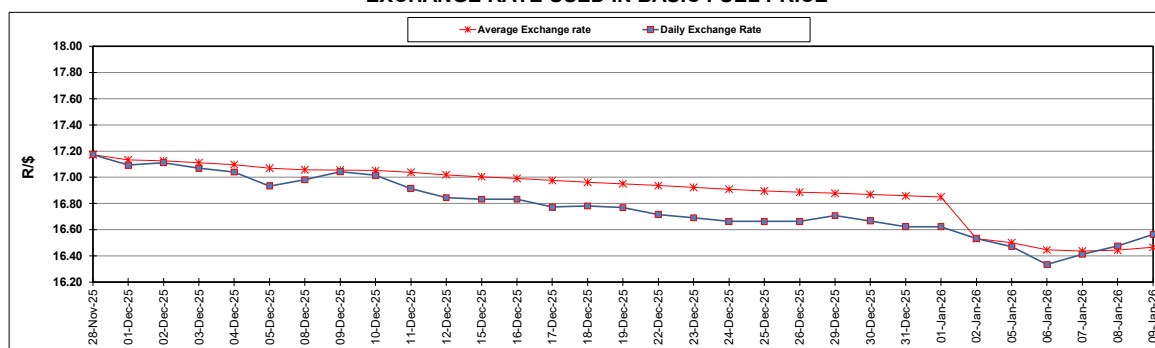
South African Cents per Litre (SA c/l)	PETROL 95 ULP	PETROL 93 ULP & LRP	DIESEL 0.05%	DIESEL 0.005%	ILL. PAR.
GAUTENG PUMP PRICE AS FROM 07/01/2026	2,075.000	2,064.000	-	-	-
WHOLESALE PRICE AS FROM 07/01/2026	-	-	1,841.830	1,852.230	1,263.098
SINGLE NATIONAL MAXIMUM RETAIL PRICE AS FROM 07/01/2026	-	-	-	-	1,598.000
BASIC FUEL PRICE - 09/01/2026	863.630	856.019	930.880	935.129	956.360
PRESS RELEASE CONTRIBUTION TO BFP 07/01/2026 - 09/01/2026	911.170	900.170	972.630	983.030	993.128
UNIT OVER/(UNDER) RECOVERY - 09/01/2026	47.540	44.151	41.750	47.901	36.768
AVERAGE BASIC FUEL PRICE 02/01/2026 - 09/01/2026	840.684	832.719	909.769	913.830	935.269
AVERAGE UNIT OVER/(UNDER) RECOVERY 02/01/2026 - 09/01/2026	103.486	98.451	131.361	144.200	112.859

### ANALYSIS MOVEMENT OF AVERAGE OVER/(UNDER) RECOVERY

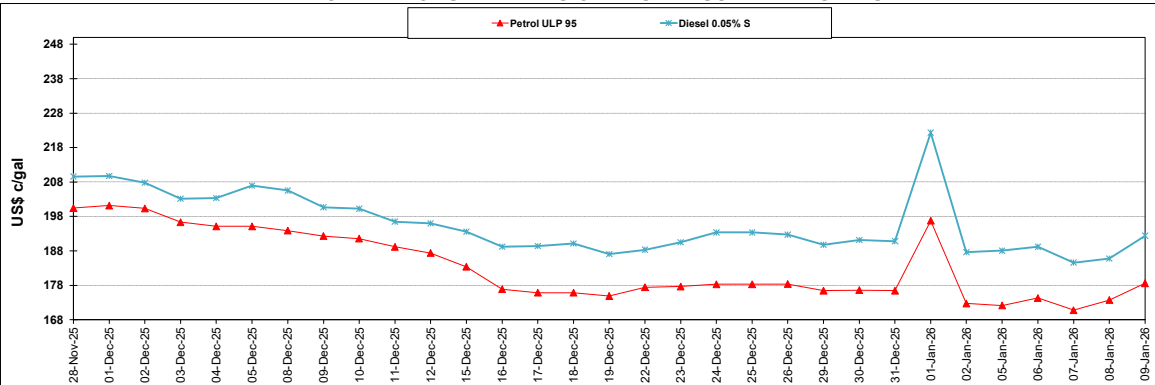
	PETROL 95	PETROL 93	DIESEL 0.05%	DIESEL 0.005%	ILL. PAR.
- MOVEMENT IN INTERNATIONAL PRODUCT PRICES	83.879	79.030	110.143	122.887	91.046
- MOVEMENT IN EXCHANGE RATE	19.607	19.421	21.218	21.313	21.813
AVERAGE UNIT OVER/(UNDER) RECOVERY 02/01/2026 - 09/01/2026	103.486	98.451	131.361	144.200	112.859

R/\$ EXCHANGE RATE - (R/\$16.5635 - 09/01/2026)

### EXCHANGE RATE USED IN BASIC FUEL PRICE



### INTERNATIONAL PRODUCT PRICES OF BASKET USED IN BASIC FUEL PRICE



### BASIC FUEL PRICE IN SA CENTS PER LITRE

