

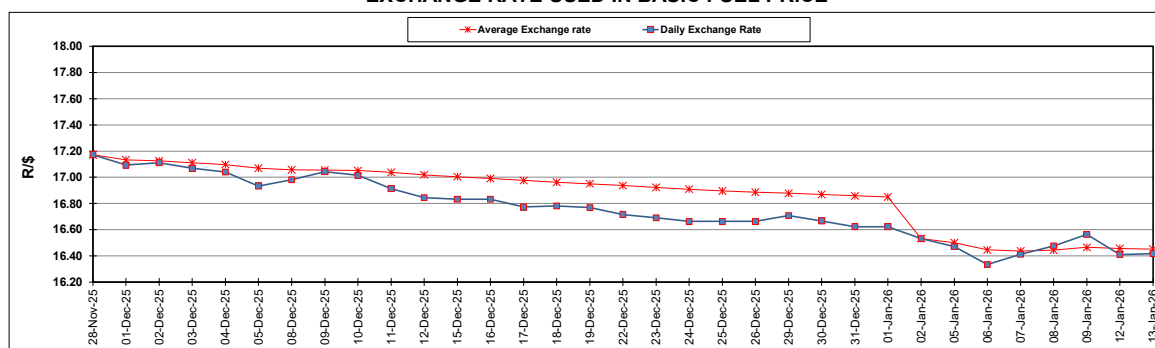
South African Cents per Litre (SA c/l)	PETROL 95 ULP	PETROL 93 ULP & LRP	DIESEL 0.05%	DIESEL 0.005%	ILL. PAR.
GAUTENG PUMP PRICE AS FROM 07/01/2026	2,075.000	2,064.000	-	-	-
WHOLESALE PRICE AS FROM 07/01/2026	-	-	1,841.830	1,852.230	1,263.098
SINGLE NATIONAL MAXIMUM RETAIL PRICE AS FROM 07/01/2026	-	-	-	-	1,598.000
BASIC FUEL PRICE - 13/01/2026	869.385	861.838	945.056	950.546	969.375
PRESS RELEASE CONTRIBUTION TO BFP 07/01/2026 - 13/01/2026	911.170	900.170	972.630	983.030	993.128
UNIT OVER/(UNDER) RECOVERY - 13/01/2026	41.785	38.332	27.574	32.484	23.753
AVERAGE BASIC FUEL PRICE 02/01/2026 - 13/01/2026	846.086	838.228	915.361	919.668	940.970
AVERAGE UNIT OVER/(UNDER) RECOVERY 02/01/2026 - 13/01/2026	89.834	85.192	108.644	119.612	93.408

### ANALYSIS MOVEMENT OF AVERAGE OVER/(UNDER) RECOVERY

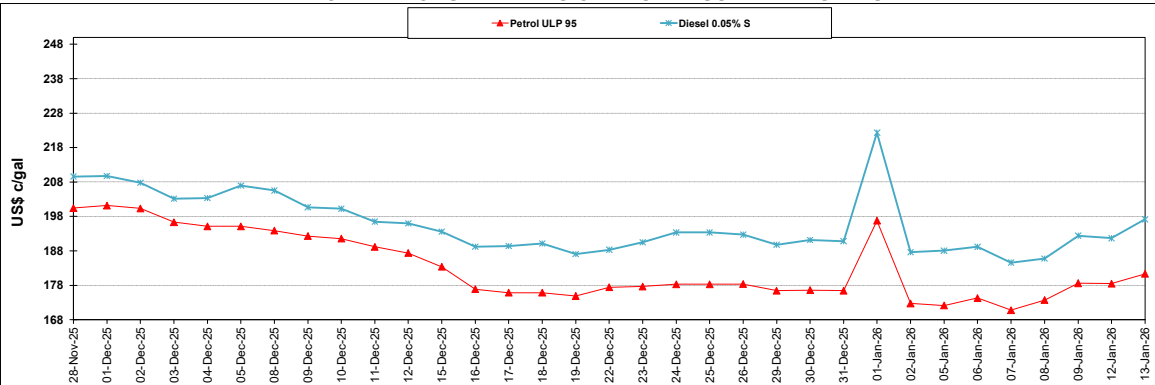
	PETROL 95	PETROL 93	DIESEL 0.05%	DIESEL 0.005%	ILL. PAR.
- MOVEMENT IN INTERNATIONAL PRODUCT PRICES	69.432	64.980	86.572	97.436	70.719
- MOVEMENT IN EXCHANGE RATE	20.402	20.212	22.072	22.176	22.689
AVERAGE UNIT OVER/(UNDER) RECOVERY 02/01/2026 - 13/01/2026	89.834	85.192	108.644	119.612	93.408

R/\$ EXCHANGE RATE - (R/\$16.4175 - 13/01/2026)

### EXCHANGE RATE USED IN BASIC FUEL PRICE



### INTERNATIONAL PRODUCT PRICES OF BASKET USED IN BASIC FUEL PRICE



### BASIC FUEL PRICE IN SA CENTS PER LITRE

