

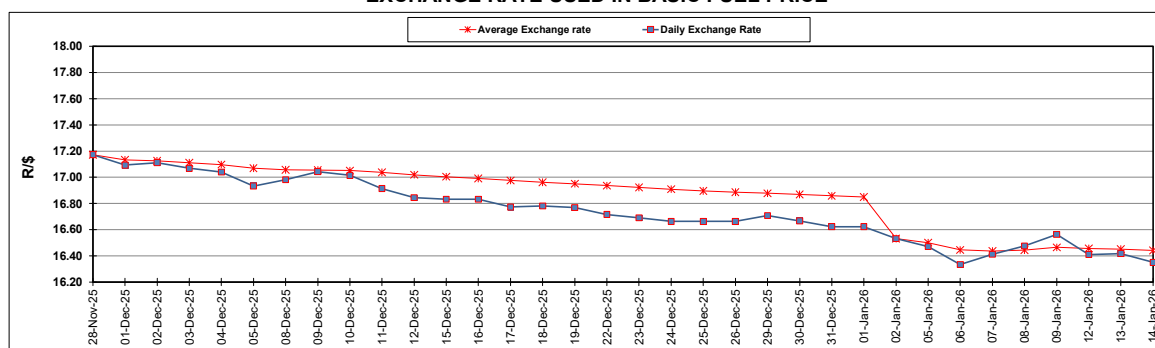
South African Cents per Litre (SA c/l)	PETROL 95 ULP	PETROL 93 ULP & LRP	DIESEL 0.05%	DIESEL 0.005%	ILL. PAR.
GAUTENG PUMP PRICE AS FROM 07/01/2026	2,075.000	2,064.000	-	-	-
WHOLESALE PRICE AS FROM 07/01/2026	-	-	1,841.830	1,852.230	1,263.098
SINGLE NATIONAL MAXIMUM RETAIL PRICE AS FROM 07/01/2026	-	-	-	-	1,598.000
BASIC FUEL PRICE - 14/01/2026	863.683	852.798	946.125	952.219	964.283
PRESS RELEASE CONTRIBUTION TO BFP 07/01/2026 - 14/01/2026	911.170	900.170	972.630	983.030	993.128
UNIT OVER/(UNDER) RECOVERY - 14/01/2026	47.487	47.372	26.505	30.811	28.845
AVERAGE BASIC FUEL PRICE 02/01/2026 - 14/01/2026	848.041	839.847	918.780	923.284	943.561
AVERAGE UNIT OVER/(UNDER) RECOVERY 02/01/2026 - 14/01/2026	85.129	80.990	99.517	109.746	86.234

### ANALYSIS MOVEMENT OF AVERAGE OVER/(UNDER) RECOVERY

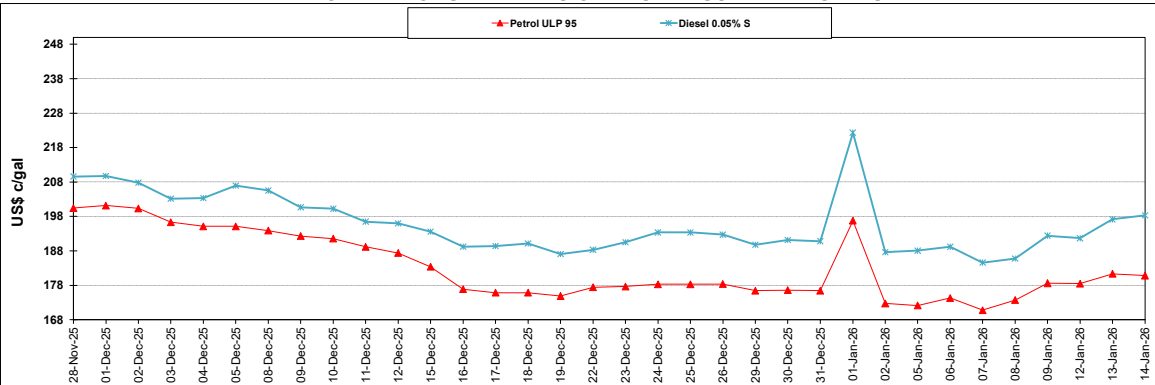
	PETROL 95	PETROL 93	DIESEL 0.05%	DIESEL 0.005%	ILL. PAR.
- MOVEMENT IN INTERNATIONAL PRODUCT PRICES	64.083	60.148	76.716	86.833	62.818
- MOVEMENT IN EXCHANGE RATE	21.046	20.842	22.801	22.913	23.416
AVERAGE UNIT OVER/(UNDER) RECOVERY 02/01/2026 - 14/01/2026	85.129	80.990	99.517	109.746	86.234

**R/\$ EXCHANGE RATE - (R/\$16.3498 - 14/01/2026)**

### EXCHANGE RATE USED IN BASIC FUEL PRICE



### INTERNATIONAL PRODUCT PRICES OF BASKET USED IN BASIC FUEL PRICE



### BASIC FUEL PRICE IN SA CENTS PER LITRE

