

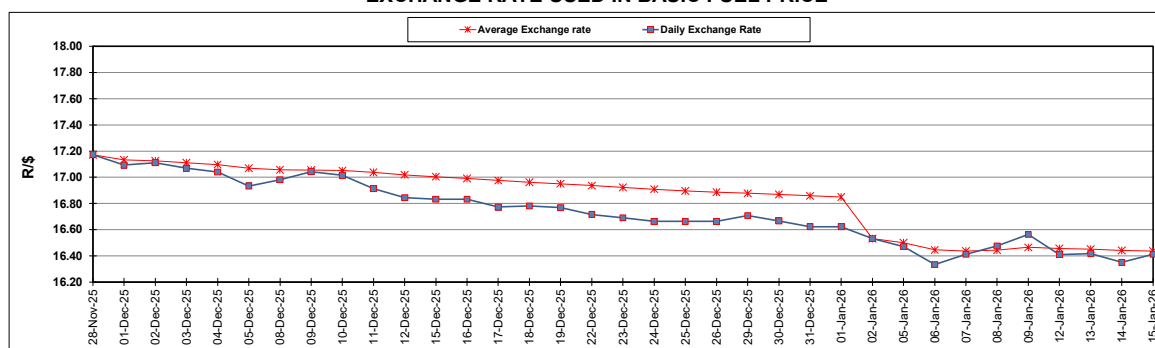
South African Cents per Litre (SA c/l)	PETROL 95 ULP	PETROL 93 ULP & LRP	DIESEL 0.05%	DIESEL 0.005%	ILL. PAR.
GAUTENG PUMP PRICE AS FROM 07/01/2026	2,075.000	2,064.000	-	-	-
WHOLESALE PRICE AS FROM 07/01/2026	-	-	1,841.830	1,852.230	1,263.098
SINGLE NATIONAL MAXIMUM RETAIL PRICE AS FROM 07/01/2026	-	-	-	-	1,598.000
BASIC FUEL PRICE - 15/01/2026	858.785	850.843	943.023	948.990	961.198
PRESS RELEASE CONTRIBUTION TO BFP 07/01/2026 - 15/01/2026	911.170	900.170	972.630	983.030	993.128
UNIT OVER/(UNDER) RECOVERY - 15/01/2026	52.385	49.327	29.607	34.040	31.930
AVERAGE BASIC FUEL PRICE 02/01/2026 - 15/01/2026	849.115	840.947	921.204	925.855	945.324
AVERAGE UNIT OVER/(UNDER) RECOVERY 02/01/2026 - 15/01/2026	81.855	77.823	92.526	102.175	80.804

ANALYSIS MOVEMENT OF AVERAGE OVER/(UNDER) RECOVERY

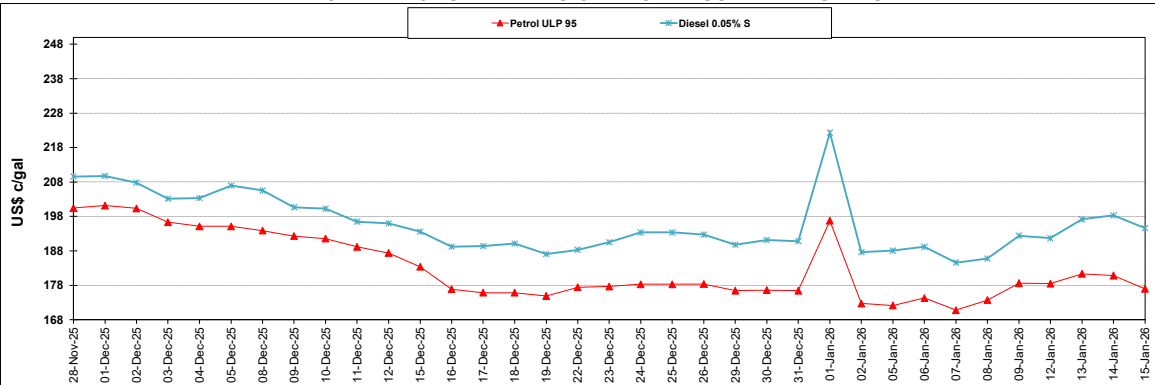
	PETROL 95	PETROL 93	DIESEL 0.05%	DIESEL 0.005%	ILL. PAR.
- MOVEMENT IN INTERNATIONAL PRODUCT PRICES	60.634	56.807	69.504	79.037	57.179
- MOVEMENT IN EXCHANGE RATE	21.221	21.016	23.022	23.138	23.625
AVERAGE UNIT OVER/(UNDER) RECOVERY 02/01/2026 - 15/01/2026	81.855	77.823	92.526	102.175	80.804

R/\$ EXCHANGE RATE - (R/\$16.4125 - 15/01/2026)

EXCHANGE RATE USED IN BASIC FUEL PRICE



INTERNATIONAL PRODUCT PRICES OF BASKET USED IN BASIC FUEL PRICE



BASIC FUEL PRICE IN SA CENTS PER LITRE

