

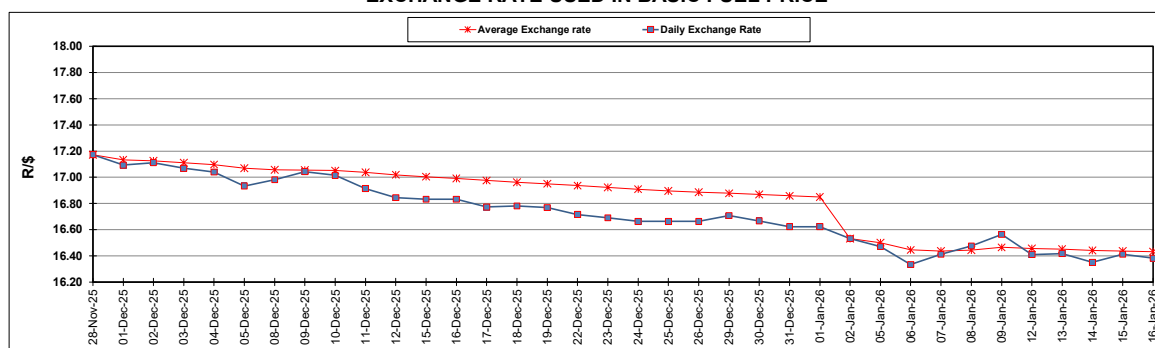
South African Cents per Litre (SA c/l)	PETROL 95 ULP	PETROL 93 ULP & LRP	DIESEL 0.05%	DIESEL 0.005%	ILL. PAR.
GAUTENG PUMP PRICE AS FROM 07/01/2026	2,075.000	2,064.000	-	-	-
WHOLESALE PRICE AS FROM 07/01/2026	-	-	1,841.830	1,852.230	1,263.098
SINGLE NATIONAL MAXIMUM RETAIL PRICE AS FROM 07/01/2026	-	-	-	-	1,598.000
BASIC FUEL PRICE - 16/01/2026	855.147	846.029	951.390	956.684	968.421
PRESS RELEASE CONTRIBUTION TO BFP 07/01/2026 - 16/01/2026	911.170	900.170	972.630	983.030	993.128
UNIT OVER/(UNDER) RECOVERY - 16/01/2026	56.023	54.141	21.240	26.346	24.707
AVERAGE BASIC FUEL PRICE 02/01/2026 - 16/01/2026	849.664	841.409	923.948	928.658	947.424
AVERAGE UNIT OVER/(UNDER) RECOVERY 02/01/2026 - 16/01/2026	79.506	75.670	86.046	95.281	75.704

ANALYSIS MOVEMENT OF AVERAGE OVER/(UNDER) RECOVERY

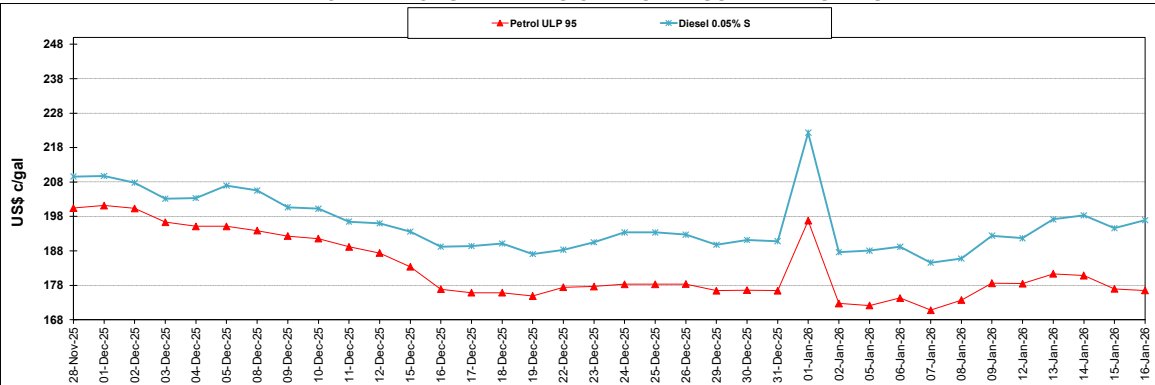
	PETROL 95	PETROL 93	DIESEL 0.05%	DIESEL 0.005%	ILL. PAR.
- MOVEMENT IN INTERNATIONAL PRODUCT PRICES	58.001	54.374	62.661	71.777	51.725
- MOVEMENT IN EXCHANGE RATE	21.505	21.296	23.385	23.504	23.979
AVERAGE UNIT OVER/(UNDER) RECOVERY 02/01/2026 - 16/01/2026	79.506	75.670	86.046	95.281	75.704

R/\$ EXCHANGE RATE - (R/\$16.3818 - 16/01/2026)

EXCHANGE RATE USED IN BASIC FUEL PRICE



INTERNATIONAL PRODUCT PRICES OF BASKET USED IN BASIC FUEL PRICE



BASIC FUEL PRICE IN SA CENTS PER LITRE

