

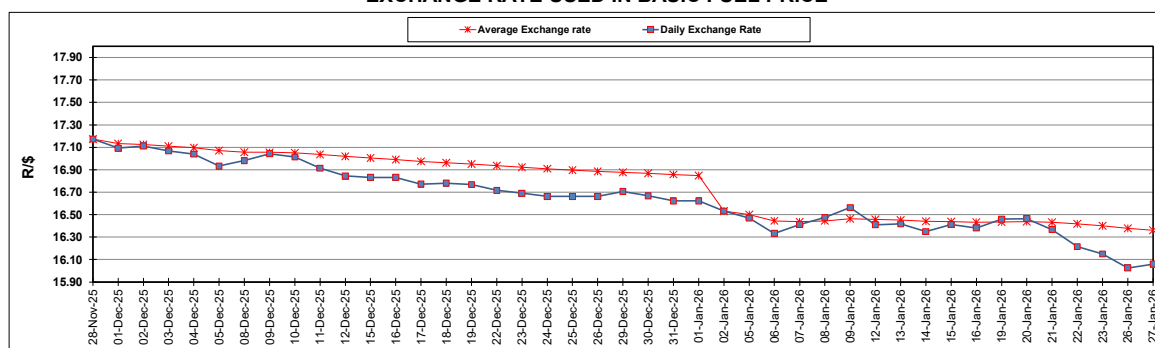
South African Cents per Litre (SA c/l)	PETROL 95 ULP	PETROL 93 ULP & LRP	DIESEL 0.05%	DIESEL 0.005%	ILL. PAR.
GAUTENG PUMP PRICE AS FROM 07/01/2026	2,075.000	2,064.000	-	-	-
WHOLESALE PRICE AS FROM 07/01/2026	-	-	1,841.830	1,852.230	1,263.098
SINGLE NATIONAL MAXIMUM RETAIL PRICE AS FROM 07/01/2026	-	-	-	-	1,598.000
BASIC FUEL PRICE - 27/01/2026	850.961	836.475	954.991	962.453	951.352
PRESS RELEASE CONTRIBUTION TO BFP 07/01/2026 - 27/01/2026	911.170	900.170	972.630	983.030	993.128
UNIT OVER/(UNDER) RECOVERY - 27/01/2026	60.209	63.695	17.639	20.577	41.776
AVERAGE BASIC FUEL PRICE 02/01/2026 - 27/01/2026	855.731	845.912	940.368	945.639	955.529
AVERAGE UNIT OVER/(UNDER) RECOVERY 02/01/2026 - 27/01/2026	66.439	64.591	55.095	62.391	55.932

ANALYSIS MOVEMENT OF AVERAGE OVER/(UNDER) RECOVERY

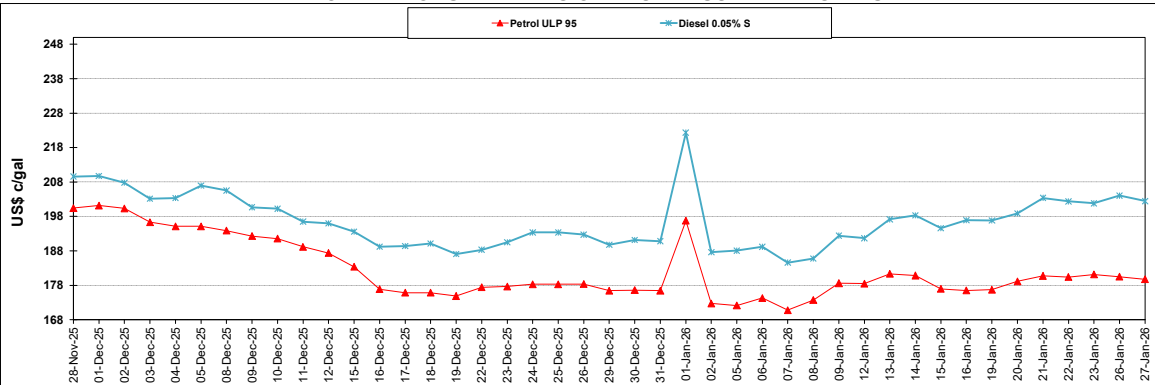
	PETROL 95	PETROL 93	DIESEL 0.05%	DIESEL 0.005%	ILL. PAR.
- MOVEMENT IN INTERNATIONAL PRODUCT PRICES	40.952	39.396	27.087	34.226	27.473
- MOVEMENT IN EXCHANGE RATE	25.487	25.195	28.008	28.165	28.459
AVERAGE UNIT OVER/(UNDER) RECOVERY 02/01/2026 - 27/01/2026	66.439	64.591	55.095	62.391	55.932

R/\$ EXCHANGE RATE - (R/\$16.0600 - 27/01/2026)

EXCHANGE RATE USED IN BASIC FUEL PRICE



INTERNATIONAL PRODUCT PRICES OF BASKET USED IN BASIC FUEL PRICE



BASIC FUEL PRICE IN SA CENTS PER LITRE

