

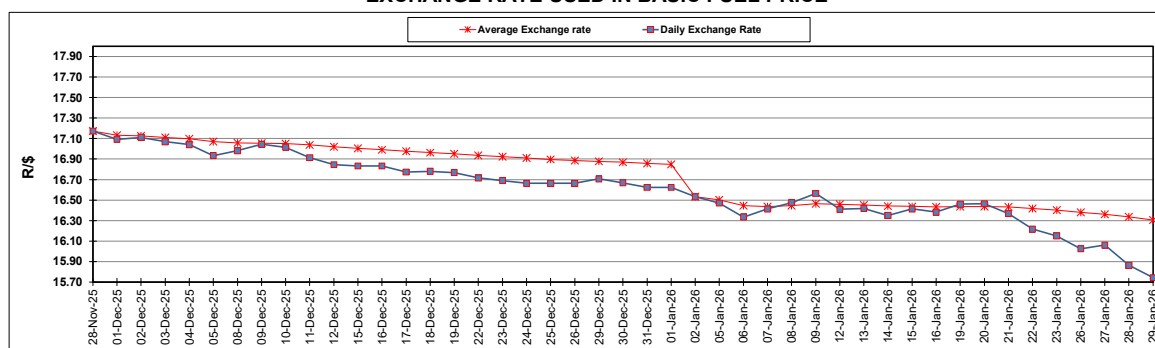
South African Cents per Litre (SA c/l)	PETROL 95 ULP	PETROL 93 ULP & LRP	DIESEL 0.05%	DIESEL 0.005%	ILL. PAR.
GAUTENG PUMP PRICE AS FROM 07/01/2026	2,075.000	2,064.000	-	-	-
WHOLESALE PRICE AS FROM 07/01/2026	-	-	1,841.830	1,852.230	1,263.098
SINGLE NATIONAL MAXIMUM RETAIL PRICE AS FROM 07/01/2026	-	-	-	-	1,598.000
BASIC FUEL PRICE - 29/01/2026	863.958	850.156	980.559	990.531	973.750
PRESS RELEASE CONTRIBUTION TO BFP 07/01/2026 - 29/01/2026	911.170	900.170	972.630	983.030	993.128
UNIT OVER/(UNDER) RECOVERY - 29/01/2026	47.212	50.014	(7.929)	(7.501)	19.378
AVERAGE BASIC FUEL PRICE 02/01/2026 - 29/01/2026	856.094	845.872	943.621	949.316	956.632
AVERAGE UNIT OVER/(UNDER) RECOVERY 02/01/2026 - 29/01/2026	64.976	63.598	49.559	56.214	52.996

### ANALYSIS MOVEMENT OF AVERAGE OVER/(UNDER) RECOVERY

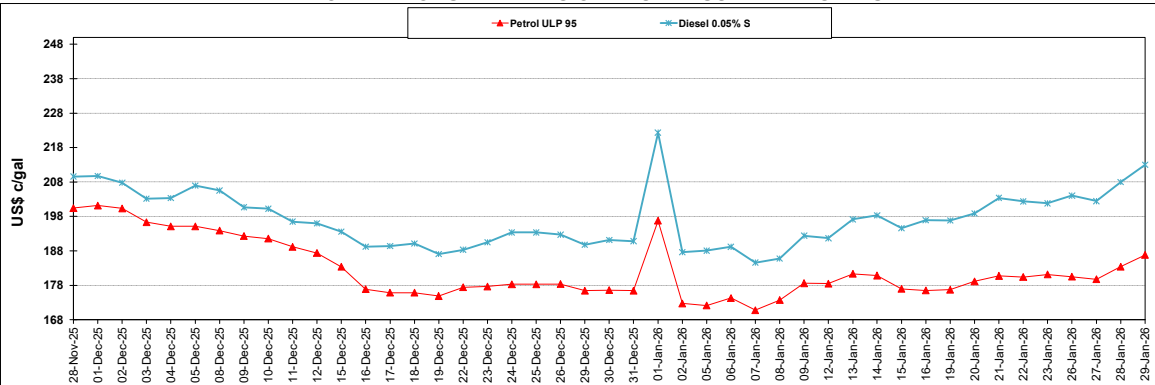
	PETROL 95	PETROL 93	DIESEL 0.05%	DIESEL 0.005%	ILL. PAR.
- MOVEMENT IN INTERNATIONAL PRODUCT PRICES	36.461	35.424	18.129	24.594	21.133
- MOVEMENT IN EXCHANGE RATE	28.515	28.174	31.430	31.620	31.863
AVERAGE UNIT OVER/(UNDER) RECOVERY 02/01/2026 - 29/01/2026	64.976	63.598	49.559	56.214	52.996

R/\$ EXCHANGE RATE - (R/\$15.7423 - 29/01/2026)

### EXCHANGE RATE USED IN BASIC FUEL PRICE



### INTERNATIONAL PRODUCT PRICES OF BASKET USED IN BASIC FUEL PRICE



### BASIC FUEL PRICE IN SA CENTS PER LITRE

