

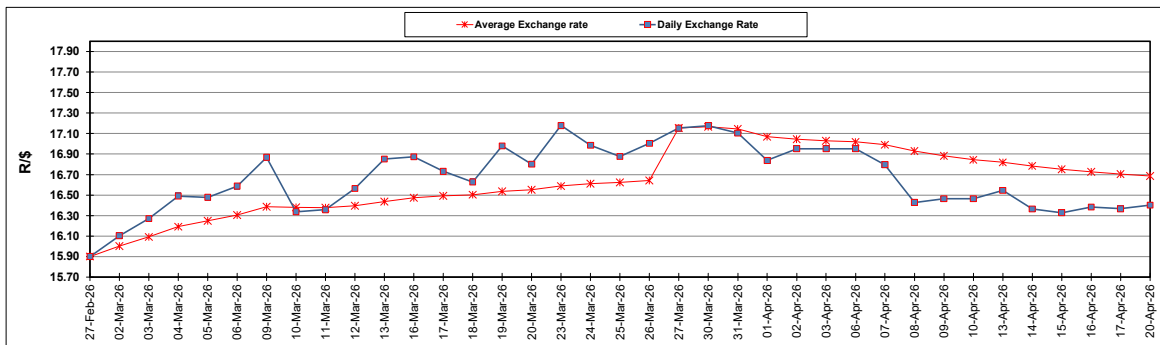
South African Cents per Litre (SA c/l)	PETROL 95 ULP	PETROL 93 ULP & LRP	DIESEL 0.05%	DIESEL 0.005%	ILL. PAR.
GAUTENG PUMP PRICE AS FROM 01/04/2026	2,336.000	2,325.000	-	-	-
WHOLESALE PRICE AS FROM 01/04/2026	-	-	2,590.830	2,611.230	2,421.098
SINGLE NATIONAL MAXIMUM RETAIL PRICE AS FROM 01/04/2026	-	-	-	-	3,147.000
BASIC FUEL PRICE - 20/04/2026	1,478.452	1,438.641	1,905.389	1,932.511	2,171.042
PRESS RELEASE CONTRIBUTION TO BFP 01/04/2026 - 20/04/2026	1,447.070	1,436.070	1,996.630	2,017.030	2,147.128
UNIT OVER/(UNDER) RECOVERY - 20/04/2026	(31.382)	(2.571)	91.241	84.519	(23.914)
AVERAGE BASIC FUEL PRICE 27/03/2026 - 20/04/2026	1,580.092	1,535.702	2,525.185	2,544.884	2,523.348
AVERAGE UNIT OVER/(UNDER) RECOVERY 27/03/2026 - 20/04/2026	(235.534)	(202.144)	(707.143)	(708.913)	(581.455)

ANALYSIS MOVEMENT OF AVERAGE OVER/(UNDER) RECOVERY

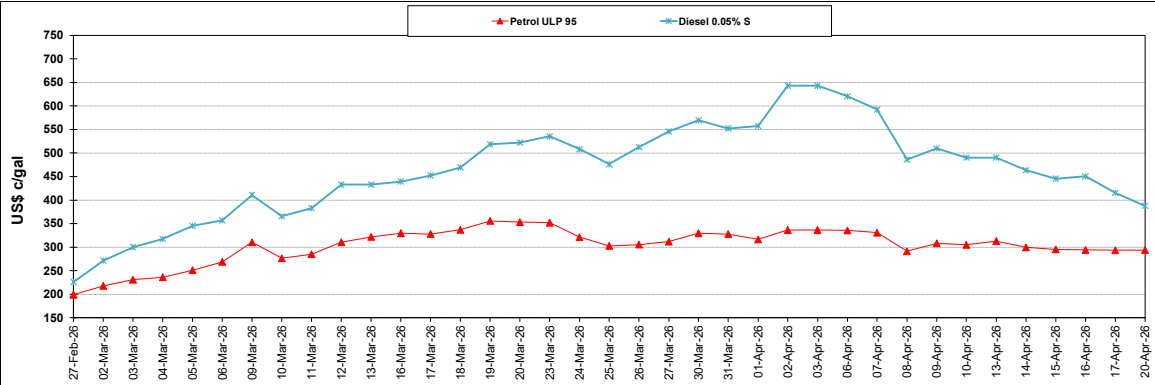
	PETROL 95	PETROL 93	DIESEL 0.05%	DIESEL 0.005%	ILL. PAR.
- MOVEMENT IN INTERNATIONAL PRODUCT PRICES	(231.434)	(198.159)	(700.590)	(702.309)	(574.907)
- MOVEMENT IN EXCHANGE RATE	(4.100)	(3.985)	(6.553)	(6.604)	(6.548)
AVERAGE UNIT OVER/(UNDER) RECOVERY 27/03/2026 - 20/04/2026	(235.534)	(202.144)	(707.143)	(708.913)	(581.455)

R/\$ EXCHANGE RATE - (R/\$16.4005 - 20/04/2026)

EXCHANGE RATE USED IN BASIC FUEL PRICE



INTERNATIONAL PRODUCT PRICES OF BASKET USED IN BASIC FUEL PRICE



BASIC FUEL PRICE IN SA CENTS PER LITRE

