

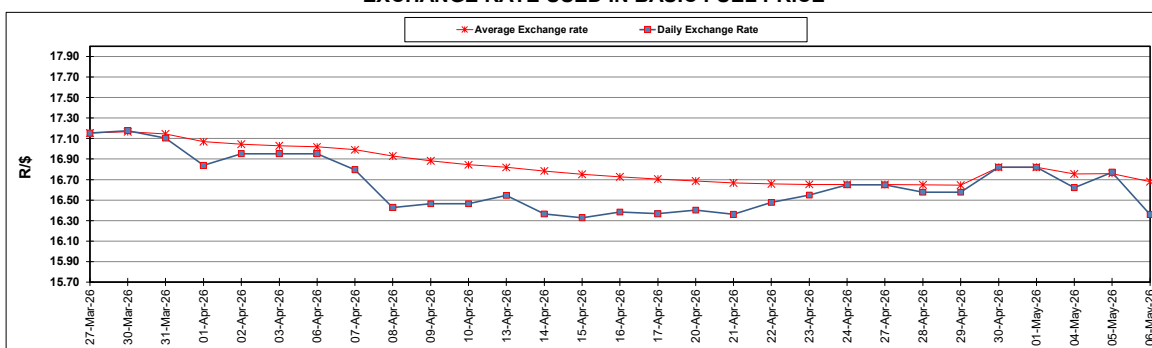
South African Cents per Litre (SA c/l)	PETROL 95 ULP	PETROL 93 ULP & LRP	DIESEL 0.05%	DIESEL 0.005%	ILL. PAR.
GAUTENG PUMP PRICE AS FROM 06/05/2026	2,663.000	2,652.000	-	-	-
WHOLESALE PRICE AS FROM 06/05/2026	-	-	3,117.530	3,137.930	2,843.098
SINGLE NATIONAL MAXIMUM RETAIL PRICE AS FROM 06/05/2026	-	-	-	-	3,710.000
BASIC FUEL PRICE - 06/05/2026	1,551.537	1,544.216	1,790.284	1,897.136	1,890.947
PRESS RELEASE CONTRIBUTION TO BFP 06/05/2026 - 06/05/2026	1,651.370	1,640.370	2,493.630	2,514.030	2,569.128
UNIT OVER/(UNDER) RECOVERY - 06/05/2026	99.833	96.154	703.346	616.894	678.181
AVERAGE BASIC FUEL PRICE 30/04/2026 - 06/05/2026	1,623.817	1,608.063	1,955.627	2,056.024	2,117.091
AVERAGE UNIT OVER/(UNDER) RECOVERY 30/04/2026 - 06/05/2026	(135.887)	(131.133)	140.403	60.406	114.437

ANALYSIS MOVEMENT OF AVERAGE OVER/(UNDER) RECOVERY

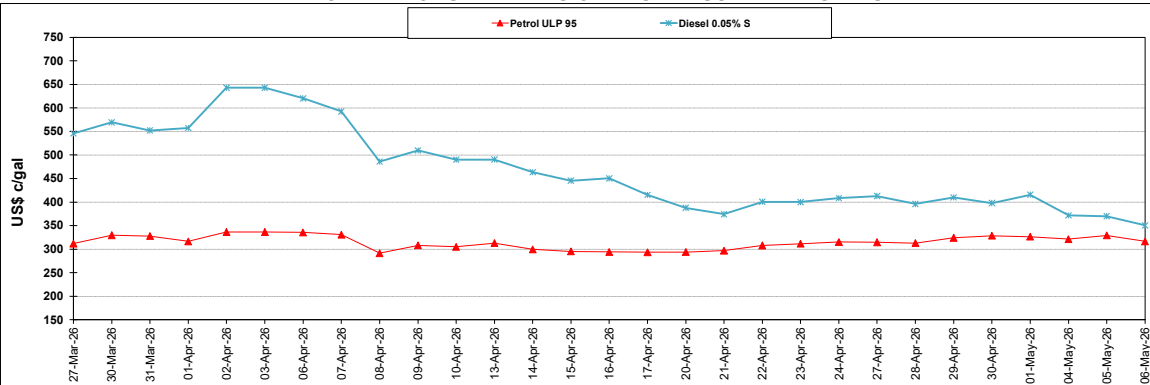
	PETROL 95	PETROL 93	DIESEL 0.05%	DIESEL 0.005%	ILL. PAR.
- MOVEMENT IN INTERNATIONAL PRODUCT PRICES	(132.820)	(128.096)	144.097	64.289	118.436
- MOVEMENT IN EXCHANGE RATE	(3.067)	(3.037)	(3.694)	(3.883)	(3.999)
AVERAGE UNIT OVER/(UNDER) RECOVERY 30/04/2026 - 06/05/2026	(135.887)	(131.133)	140.403	60.406	114.437

R/\$ EXCHANGE RATE - (R/\$16.3585 - 06/05/2026)

EXCHANGE RATE USED IN BASIC FUEL PRICE



INTERNATIONAL PRODUCT PRICES OF BASKET USED IN BASIC FUEL PRICE



BASIC FUEL PRICE IN SA CENTS PER LITRE

