

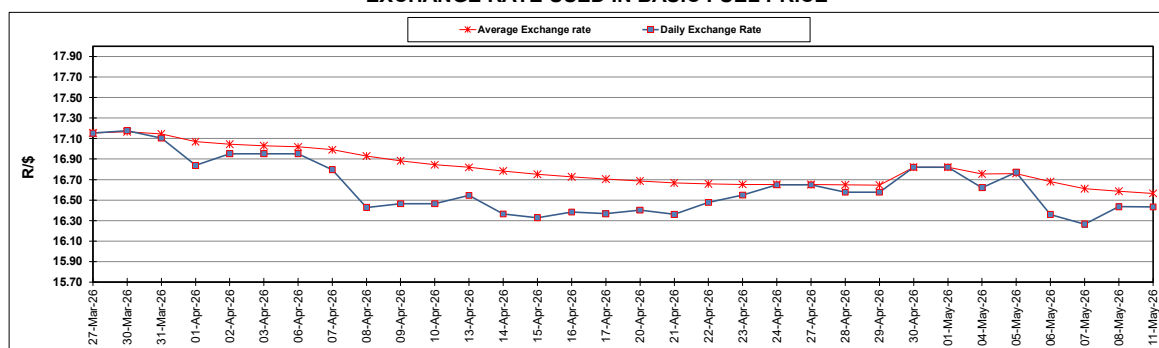
South African Cents per Litre (SA c/l)	PETROL 95 ULP	PETROL 93 ULP & LRP	DIESEL 0.05%	DIESEL 0.005%	ILL. PAR.
GAUTENG PUMP PRICE AS FROM 06/05/2026	2,663.000	2,652.000	-	-	-
WHOLESALE PRICE AS FROM 06/05/2026	-	-	3,117.530	3,137.930	2,843.098
SINGLE NATIONAL MAXIMUM RETAIL PRICE AS FROM 06/05/2026	-	-	-	-	3,710.000
BASIC FUEL PRICE - 11/05/2026	1,568.324	1,550.115	1,796.307	1,907.512	1,882.266
PRESS RELEASE CONTRIBUTION TO BFP 06/05/2026 - 11/05/2026	1,651.370	1,640.370	2,493.630	2,514.030	2,569.128
UNIT OVER/(UNDER) RECOVERY - 11/05/2026	83.046	90.255	697.323	606.518	686.862
AVERAGE BASIC FUEL PRICE 30/04/2026 - 11/05/2026	1,589.057	1,574.089	1,884.027	1,988.834	2,010.257
AVERAGE UNIT OVER/(UNDER) RECOVERY 30/04/2026 - 11/05/2026	(39.837)	(35.869)	361.103	276.696	347.871

### ANALYSIS MOVEMENT OF AVERAGE OVER/(UNDER) RECOVERY

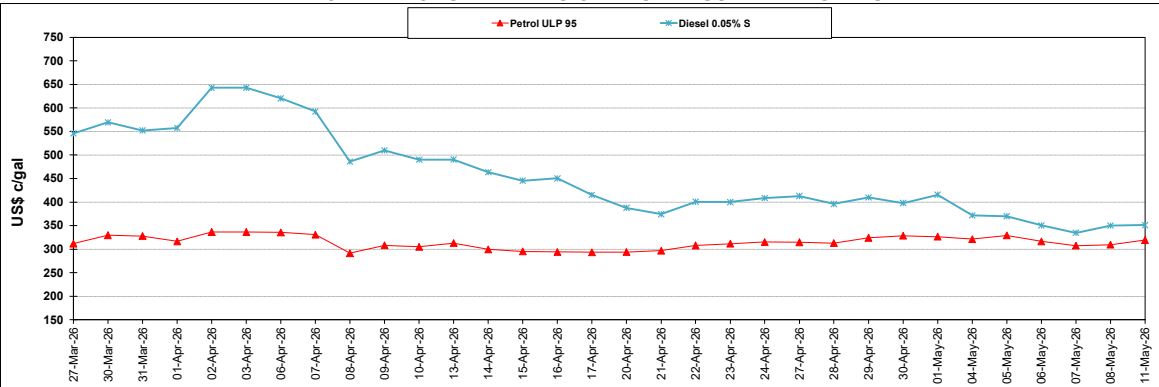
	PETROL 95	PETROL 93	DIESEL 0.05%	DIESEL 0.005%	ILL. PAR.
- MOVEMENT IN INTERNATIONAL PRODUCT PRICES	(47.626)	(43.585)	351.868	266.947	338.017
- MOVEMENT IN EXCHANGE RATE	7.789	7.716	9.235	9.749	9.854
AVERAGE UNIT OVER/(UNDER) RECOVERY 30/04/2026 - 11/05/2026	(39.837)	(35.869)	361.103	276.696	347.871

### R/\$ EXCHANGE RATE - (R/\$16.4328 - 11/05/2026)

#### EXCHANGE RATE USED IN BASIC FUEL PRICE



#### INTERNATIONAL PRODUCT PRICES OF BASKET USED IN BASIC FUEL PRICE



#### BASIC FUEL PRICE IN SA CENTS PER LITRE

