

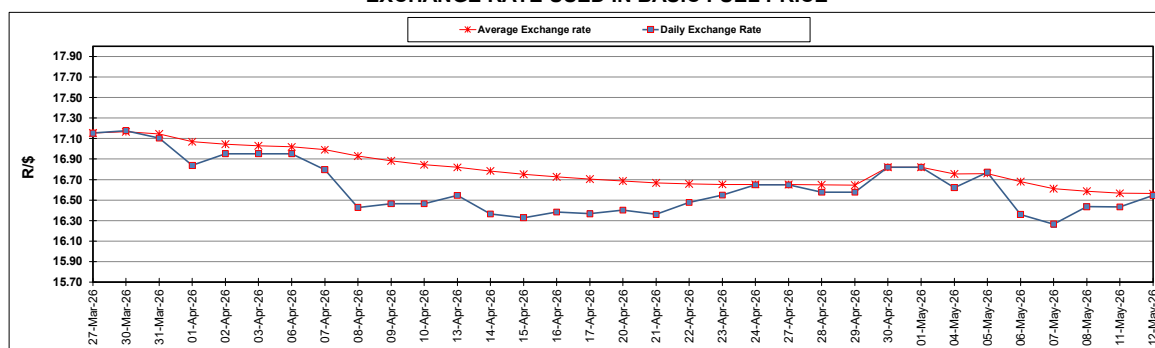
South African Cents per Litre (SA c/l)	PETROL 95 ULP	PETROL 93 ULP & LRP	DIESEL 0.05%	DIESEL 0.005%	ILL. PAR.
GAUTENG PUMP PRICE AS FROM 06/05/2026	2,663.000	2,652.000	-	-	-
WHOLESALE PRICE AS FROM 06/05/2026	-	-	3,117.530	3,137.930	2,843.098
SINGLE NATIONAL MAXIMUM RETAIL PRICE AS FROM 06/05/2026	-	-	-	-	3,710.000
BASIC FUEL PRICE - 12/05/2026	1,618.807	1,602.763	1,851.186	1,968.272	1,929.331
PRESS RELEASE CONTRIBUTION TO BFP 06/05/2026 - 12/05/2026	1,651.370	1,640.370	2,493.630	2,514.030	2,569.128
UNIT OVER/(UNDER) RECOVERY - 12/05/2026	32.563	37.607	642.444	545.758	639.797
AVERAGE BASIC FUEL PRICE 30/04/2026 - 12/05/2026	1,592.363	1,577.275	1,880.378	1,986.549	2,001.265
AVERAGE UNIT OVER/(UNDER) RECOVERY 30/04/2026 - 12/05/2026	(31.793)	(27.705)	392.363	306.592	380.307

### ANALYSIS MOVEMENT OF AVERAGE OVER/(UNDER) RECOVERY

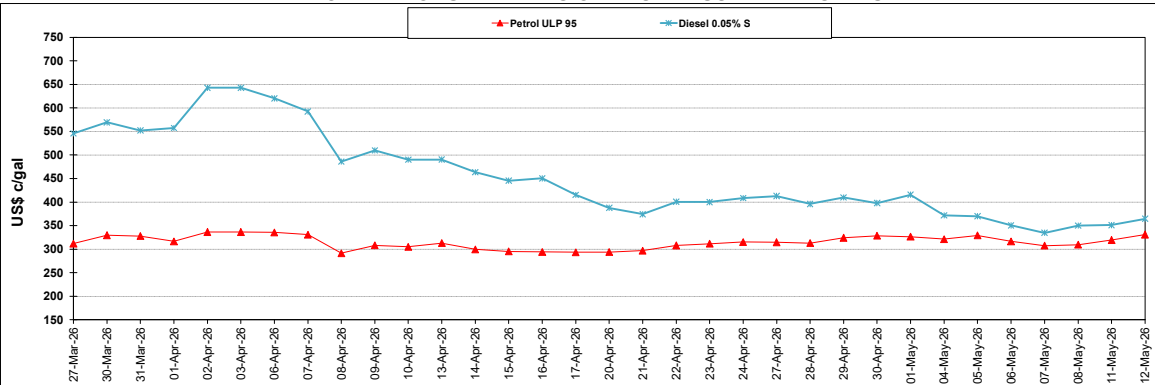
	PETROL 95	PETROL 93	DIESEL 0.05%	DIESEL 0.005%	ILL. PAR.
- MOVEMENT IN INTERNATIONAL PRODUCT PRICES	(39.840)	(35.676)	382.861	296.553	370.194
- MOVEMENT IN EXCHANGE RATE	8.047	7.971	9.502	10.039	10.113
AVERAGE UNIT OVER/(UNDER) RECOVERY 30/04/2026 - 12/05/2026	(31.793)	(27.705)	392.363	306.592	380.307

### R/\$ EXCHANGE RATE - (R/\$16.5438 - 12/05/2026)

#### EXCHANGE RATE USED IN BASIC FUEL PRICE



#### INTERNATIONAL PRODUCT PRICES OF BASKET USED IN BASIC FUEL PRICE



#### BASIC FUEL PRICE IN SA CENTS PER LITRE

