

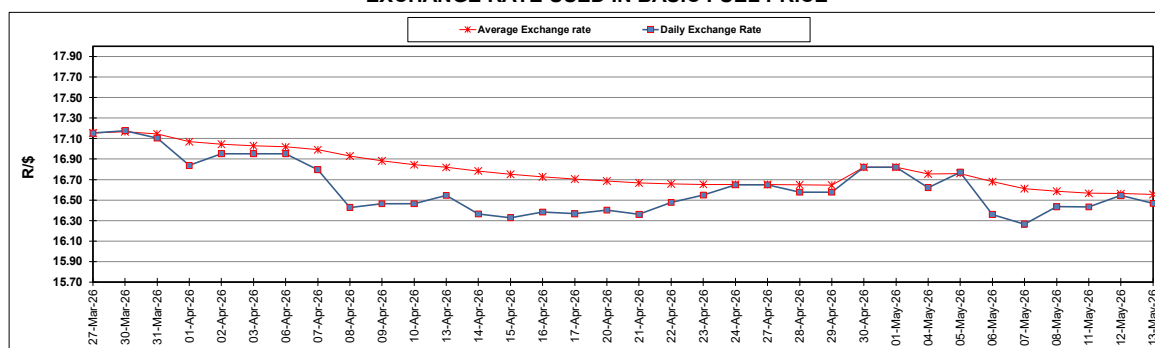
South African Cents per Litre (SA c/l)	PETROL 95 ULP	PETROL 93 ULP & LRP	DIESEL 0.05%	DIESEL 0.005%	ILL. PAR.
GAUTENG PUMP PRICE AS FROM 06/05/2026	2,663.000	2,652.000	-	-	-
WHOLESALE PRICE AS FROM 06/05/2026	-	-	3,117.530	3,137.930	2,843.098
SINGLE NATIONAL MAXIMUM RETAIL PRICE AS FROM 06/05/2026	-	-	-	-	3,710.000
BASIC FUEL PRICE - 13/05/2026	1,617.719	1,601.766	1,856.411	1,977.511	1,914.004
PRESS RELEASE CONTRIBUTION TO BFP 06/05/2026 - 13/05/2026	1,651.370	1,640.370	2,493.630	2,514.030	2,569.128
UNIT OVER/(UNDER) RECOVERY - 13/05/2026	33.651	38.604	637.219	536.519	655.124
AVERAGE BASIC FUEL PRICE 30/04/2026 - 13/05/2026	1,594.898	1,579.724	1,877.981	1,985.646	1,992.539
AVERAGE UNIT OVER/(UNDER) RECOVERY 30/04/2026 - 13/05/2026	(25.248)	(21.074)	416.849	329.584	407.789

ANALYSIS MOVEMENT OF AVERAGE OVER/(UNDER) RECOVERY

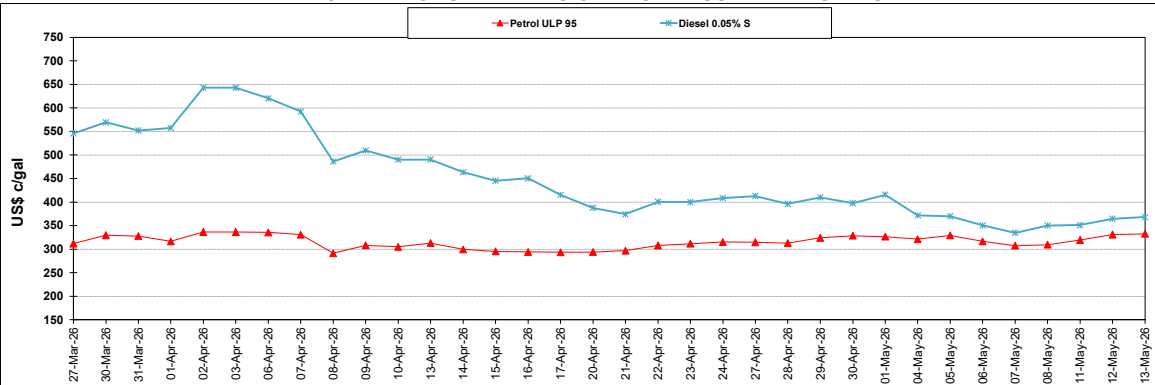
	PETROL 95	PETROL 93	DIESEL 0.05%	DIESEL 0.005%	ILL. PAR.
- MOVEMENT IN INTERNATIONAL PRODUCT PRICES	(34.228)	(29.968)	406.276	318.404	396.571
- MOVEMENT IN EXCHANGE RATE	8.980	8.894	10.573	11.180	11.218
AVERAGE UNIT OVER/(UNDER) RECOVERY 30/04/2026 - 13/05/2026	(25.248)	(21.074)	416.849	329.584	407.789

R/\$ EXCHANGE RATE - (R/\$16.4672 - 13/05/2026)

EXCHANGE RATE USED IN BASIC FUEL PRICE



INTERNATIONAL PRODUCT PRICES OF BASKET USED IN BASIC FUEL PRICE



BASIC FUEL PRICE IN SA CENTS PER LITRE

