

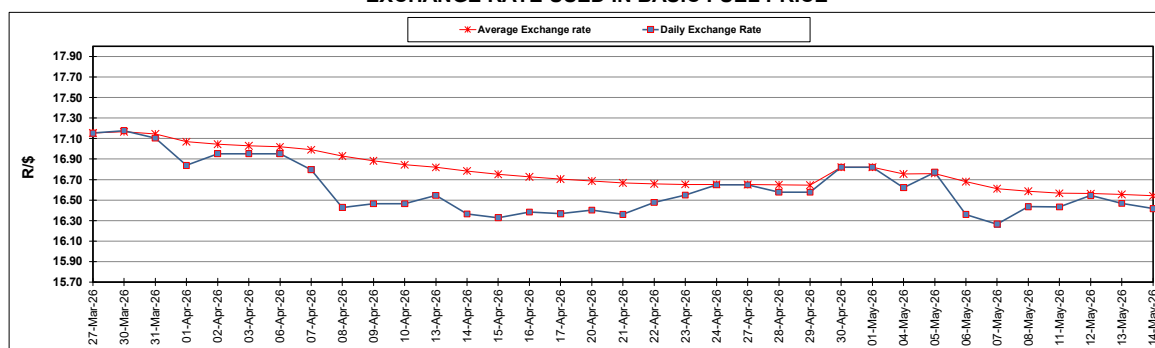
South African Cents per Litre (SA c/l)	PETROL 95 ULP	PETROL 93 ULP & LRP	DIESEL 0.05%	DIESEL 0.005%	ILL. PAR.
GAUTENG PUMP PRICE AS FROM 06/05/2026	2,663.000	2,652.000	-	-	-
WHOLESALE PRICE AS FROM 06/05/2026	-	-	3,117.530	3,137.930	2,843.098
SINGLE NATIONAL MAXIMUM RETAIL PRICE AS FROM 06/05/2026	-	-	-	-	3,710.000
BASIC FUEL PRICE - 14/05/2026	1,606.381	1,576.980	1,808.536	1,934.481	1,836.632
PRESS RELEASE CONTRIBUTION TO BFP 06/05/2026 - 14/05/2026	1,651.370	1,640.370	2,493.630	2,514.030	2,569.128
UNIT OVER/(UNDER) RECOVERY - 14/05/2026	44.989	63.390	685.094	579.549	732.496
AVERAGE BASIC FUEL PRICE 30/04/2026 - 14/05/2026	1,595.942	1,579.475	1,871.668	1,980.994	1,978.366
AVERAGE UNIT OVER/(UNDER) RECOVERY 30/04/2026 - 14/05/2026	(18.863)	(13.396)	441.235	352.309	437.307

ANALYSIS MOVEMENT OF AVERAGE OVER/(UNDER) RECOVERY

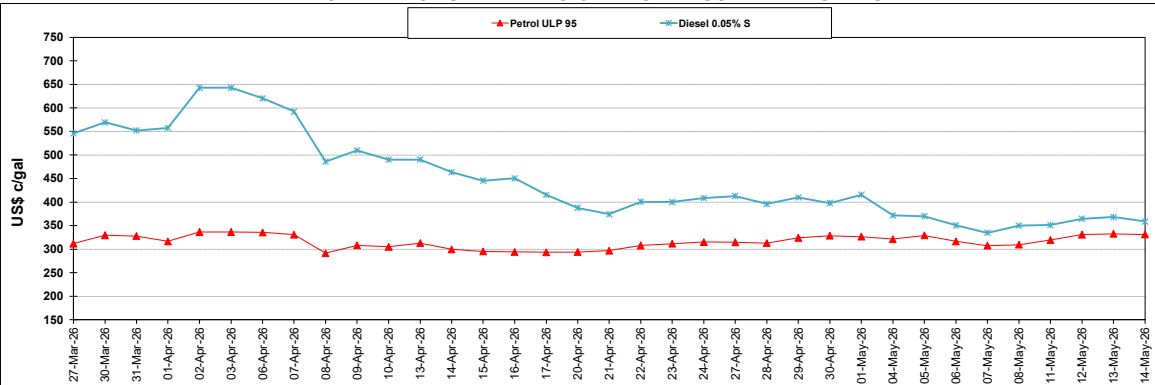
	PETROL 95	PETROL 93	DIESEL 0.05%	DIESEL 0.005%	ILL. PAR.
- MOVEMENT IN INTERNATIONAL PRODUCT PRICES	(29.071)	(23.499)	429.263	339.638	424.653
- MOVEMENT IN EXCHANGE RATE	10.208	10.103	11.972	12.671	12.654
AVERAGE UNIT OVER/(UNDER) RECOVERY 30/04/2026 - 14/05/2026	(18.863)	(13.396)	441.235	352.309	437.307

R/\$ EXCHANGE RATE - (R/\$16.4154 - 14/05/2026)

EXCHANGE RATE USED IN BASIC FUEL PRICE



INTERNATIONAL PRODUCT PRICES OF BASKET USED IN BASIC FUEL PRICE



BASIC FUEL PRICE IN SA CENTS PER LITRE

