

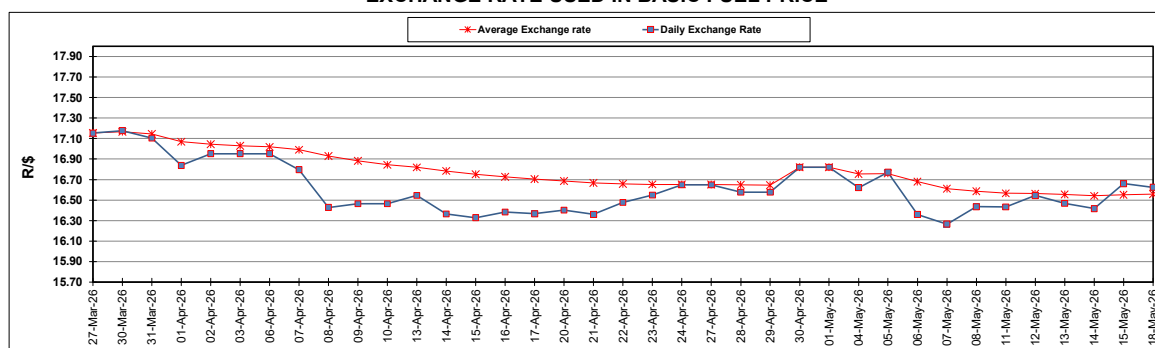
South African Cents per Litre (SA c/l)	PETROL 95 ULP	PETROL 93 ULP & LRP	DIESEL 0.05%	DIESEL 0.005%	ILL. PAR.
GAUTENG PUMP PRICE AS FROM 06/05/2026	2,663.000	2,652.000	-	-	-
WHOLESALE PRICE AS FROM 06/05/2026	-	-	3,117.530	3,137.930	2,843.098
SINGLE NATIONAL MAXIMUM RETAIL PRICE AS FROM 06/05/2026	-	-	-	-	3,710.000
BASIC FUEL PRICE - 18/05/2026	1,672.814	1,648.347	1,923.785	2,023.120	1,962.996
PRESS RELEASE CONTRIBUTION TO BFP 06/05/2026 - 18/05/2026	1,651.370	1,640.370	2,493.630	2,514.030	2,569.128
UNIT OVER/(UNDER) RECOVERY - 18/05/2026	(21.444)	(7.977)	569.845	490.910	606.132
AVERAGE BASIC FUEL PRICE 30/04/2026 - 18/05/2026	1,606.136	1,588.381	1,876.341	1,986.321	1,972.795
AVERAGE UNIT OVER/(UNDER) RECOVERY 30/04/2026 - 18/05/2026	(17.628)	(10.873)	464.366	374.786	466.487

### ANALYSIS MOVEMENT OF AVERAGE OVER/(UNDER) RECOVERY

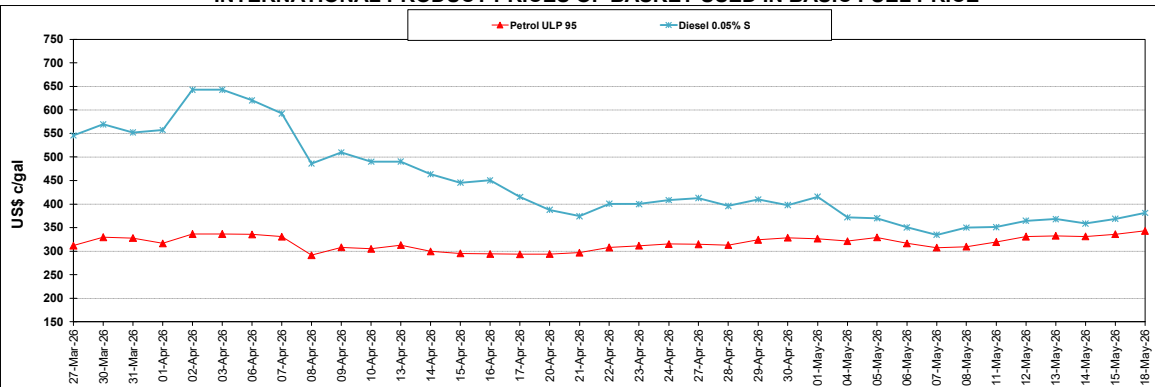
	PETROL 95	PETROL 93	DIESEL 0.05%	DIESEL 0.005%	ILL. PAR.
- MOVEMENT IN INTERNATIONAL PRODUCT PRICES	(26.378)	(19.527)	454.144	363.965	455.739
- MOVEMENT IN EXCHANGE RATE	8.750	8.654	10.222	10.821	10.748
AVERAGE UNIT OVER/(UNDER) RECOVERY 30/04/2026 - 18/05/2026	(17.628)	(10.873)	464.366	374.786	466.487

R/\$ EXCHANGE RATE - (R/\$16.6244 - 18/05/2026)

### EXCHANGE RATE USED IN BASIC FUEL PRICE



### INTERNATIONAL PRODUCT PRICES OF BASKET USED IN BASIC FUEL PRICE



### BASIC FUEL PRICE IN SA CENTS PER LITRE

