

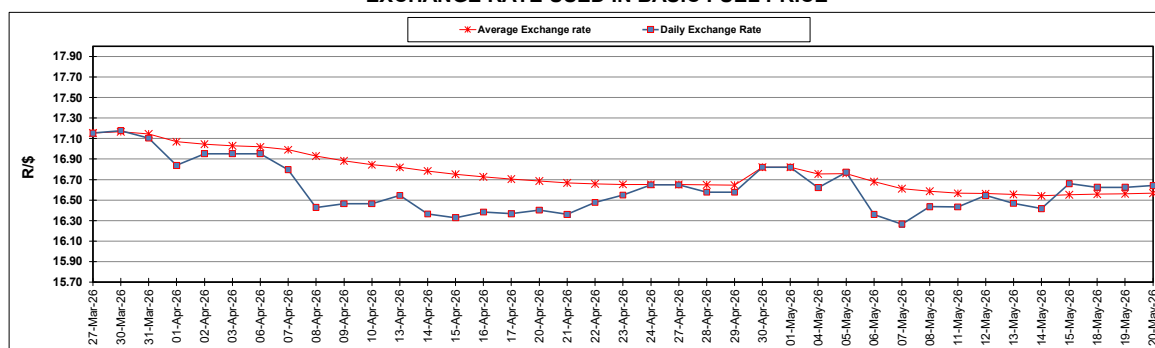
South African Cents per Litre (SA c/l)	PETROL 95 ULP	PETROL 93 ULP & LRP	DIESEL 0.05%	DIESEL 0.005%	ILL. PAR.
GAUTENG PUMP PRICE AS FROM 06/05/2026	2,663.000	2,652.000	-	-	-
WHOLESALE PRICE AS FROM 06/05/2026	-	-	3,117.530	3,137.930	2,843.098
SINGLE NATIONAL MAXIMUM RETAIL PRICE AS FROM 06/05/2026	-	-	-	-	3,710.000
BASIC FUEL PRICE - 20/05/2026	1,606.957	1,593.778	1,883.713	1,943.270	1,905.174
PRESS RELEASE CONTRIBUTION TO BFP 06/05/2026 - 20/05/2026	1,651.370	1,640.370	2,493.630	2,514.030	2,569.128
UNIT OVER/(UNDER) RECOVERY - 20/05/2026	44.413	46.592	609.917	570.760	663.954
AVERAGE BASIC FUEL PRICE 30/04/2026 - 20/05/2026	1,609.634	1,591.738	1,880.081	1,984.642	1,967.682
AVERAGE UNIT OVER/(UNDER) RECOVERY 30/04/2026 - 20/05/2026	(12.744)	(5.848)	481.016	396.855	488.913

ANALYSIS MOVEMENT OF AVERAGE OVER/(UNDER) RECOVERY

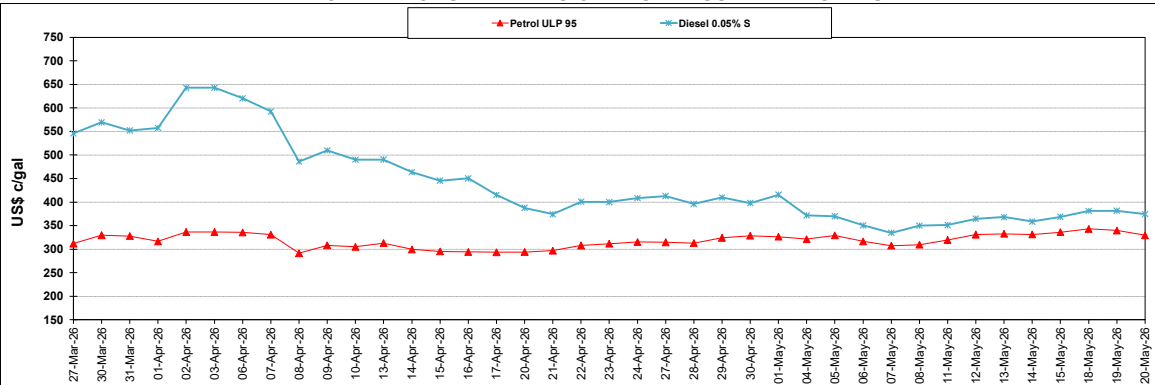
	PETROL 95	PETROL 93	DIESEL 0.05%	DIESEL 0.005%	ILL. PAR.
- MOVEMENT IN INTERNATIONAL PRODUCT PRICES	(20.527)	(13.544)	471.926	387.259	479.399
- MOVEMENT IN EXCHANGE RATE	7.783	7.696	9.090	9.596	9.514
AVERAGE UNIT OVER/(UNDER) RECOVERY 30/04/2026 - 20/05/2026	(12.744)	(5.848)	481.016	396.855	488.913

R/\$ EXCHANGE RATE - (R/\$16.6403 - 20/05/2026)

EXCHANGE RATE USED IN BASIC FUEL PRICE



INTERNATIONAL PRODUCT PRICES OF BASKET USED IN BASIC FUEL PRICE



BASIC FUEL PRICE IN SA CENTS PER LITRE

