

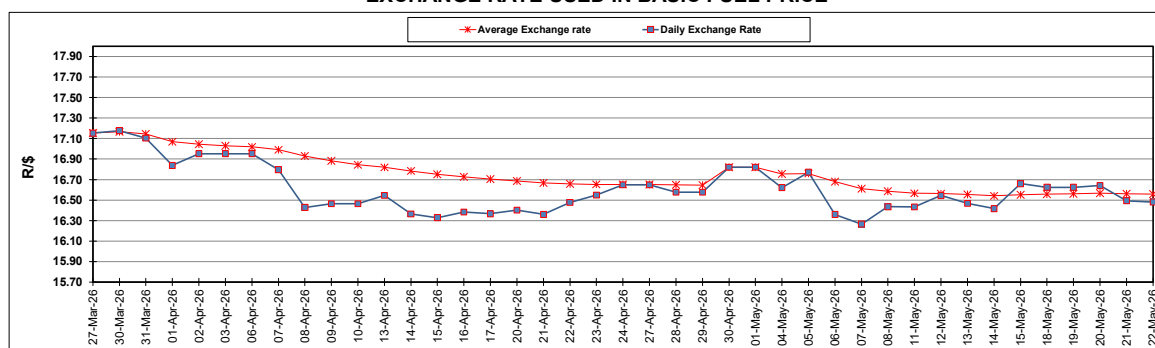
South African Cents per Litre (SA c/l)	PETROL 95 ULP	PETROL 93 ULP & LRP	DIESEL 0.05%	DIESEL 0.005%	ILL. PAR.
GAUTENG PUMP PRICE AS FROM 06/05/2026	2,663.000	2,652.000	-	-	-
WHOLESALE PRICE AS FROM 06/05/2026	-	-	3,117.530	3,137.930	2,843.098
SINGLE NATIONAL MAXIMUM RETAIL PRICE AS FROM 06/05/2026	-	-	-	-	3,710.000
BASIC FUEL PRICE - 22/05/2026	1,512.316	1,508.088	1,812.490	1,845.605	1,778.156
PRESS RELEASE CONTRIBUTION TO BFP 06/05/2026 - 22/05/2026	1,651.370	1,640.370	2,493.630	2,514.030	2,569.128
UNIT OVER/(UNDER) RECOVERY - 22/05/2026	139.054	132.282	681.140	668.425	790.972
AVERAGE BASIC FUEL PRICE 30/04/2026 - 22/05/2026	1,600.273	1,583.983	1,874.939	1,971.104	1,948.619
AVERAGE UNIT OVER/(UNDER) RECOVERY 30/04/2026 - 22/05/2026	3.026	8.316	501.750	425.985	521.215

### ANALYSIS MOVEMENT OF AVERAGE OVER/(UNDER) RECOVERY

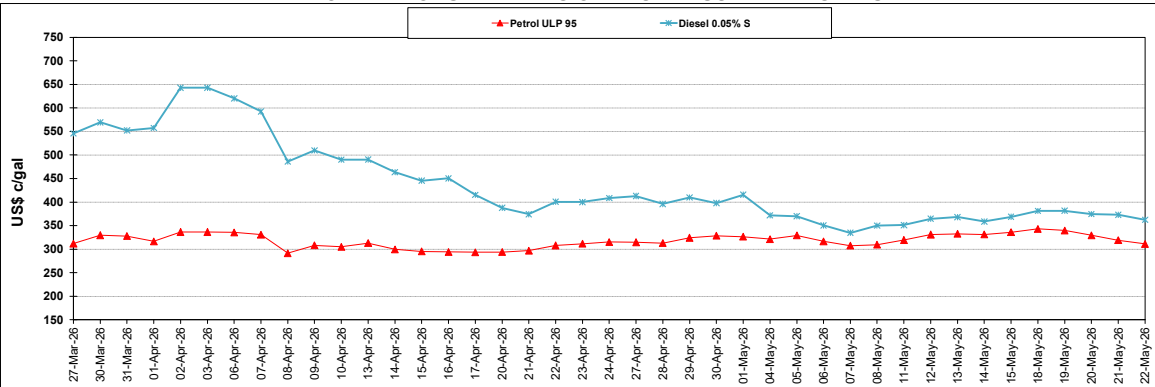
	PETROL 95	PETROL 93	DIESEL 0.05%	DIESEL 0.005%	ILL. PAR.
- MOVEMENT IN INTERNATIONAL PRODUCT PRICES	(5.624)	(0.246)	491.615	415.330	510.682
- MOVEMENT IN EXCHANGE RATE	8.650	8.562	10.135	10.655	10.533
AVERAGE UNIT OVER/(UNDER) RECOVERY 30/04/2026 - 22/05/2026	3.026	8.316	501.750	425.985	521.215

**R/\$ EXCHANGE RATE - (R/\$16.4808 - 22/05/2026)**

### EXCHANGE RATE USED IN BASIC FUEL PRICE



### INTERNATIONAL PRODUCT PRICES OF BASKET USED IN BASIC FUEL PRICE



### BASIC FUEL PRICE IN SA CENTS PER LITRE

