

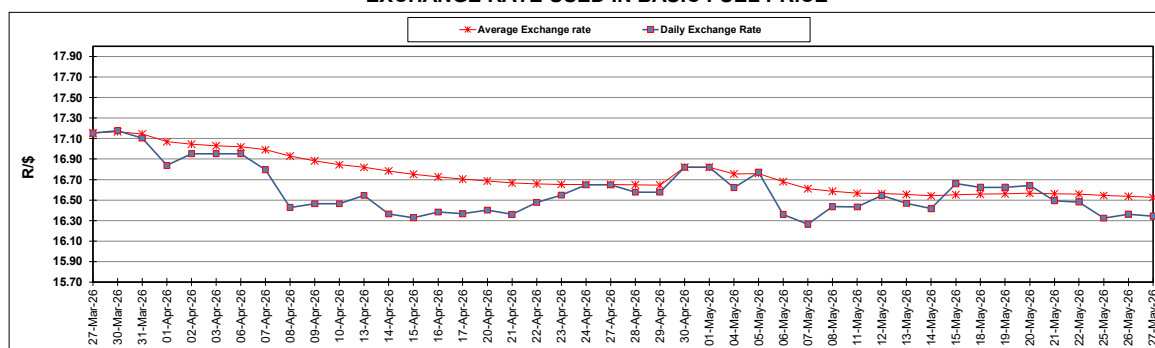
South African Cents per Litre (SA c/l)	PETROL 95 ULP	PETROL 93 ULP & LRP	DIESEL 0.05%	DIESEL 0.005%	ILL. PAR.
GAUTENG PUMP PRICE AS FROM 06/05/2026	2,663.000	2,652.000	-	-	-
WHOLESALE PRICE AS FROM 06/05/2026	-	-	3,117.530	3,137.930	2,843.098
SINGLE NATIONAL MAXIMUM RETAIL PRICE AS FROM 06/05/2026	-	-	-	-	3,710.000
BASIC FUEL PRICE - 27/05/2026	1,423.785	1,416.487	1,690.463	1,719.356	1,633.774
PRESS RELEASE CONTRIBUTION TO BFP 06/05/2026 - 27/05/2026	1,651.370	1,640.370	2,493.630	2,514.030	2,569.128
UNIT OVER/(UNDER) RECOVERY - 27/05/2026	227.585	223.883	803.167	794.674	935.354
AVERAGE BASIC FUEL PRICE 30/04/2026 - 27/05/2026	1,578.796	1,564.027	1,851.204	1,937.459	1,906.201
AVERAGE UNIT OVER/(UNDER) RECOVERY 30/04/2026 - 27/05/2026	31.714	35.483	543.026	477.171	578.527

ANALYSIS MOVEMENT OF AVERAGE OVER/(UNDER) RECOVERY

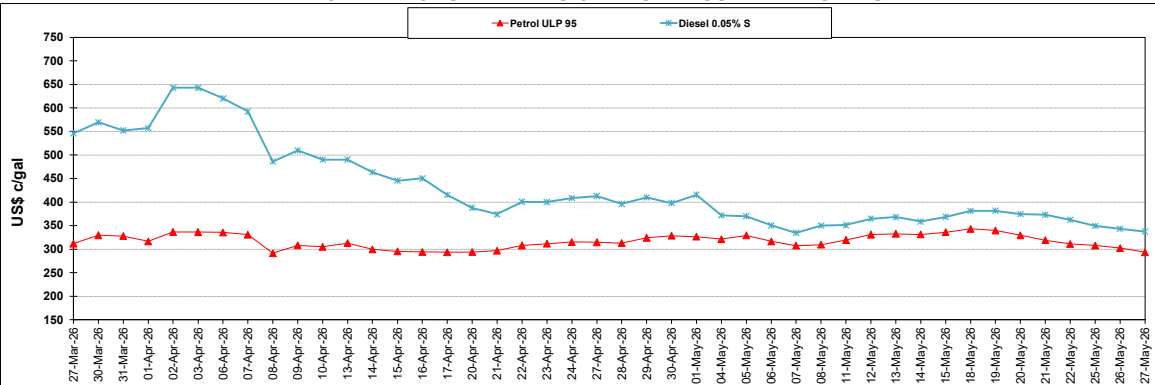
	PETROL 95	PETROL 93	DIESEL 0.05%	DIESEL 0.005%	ILL. PAR.
- MOVEMENT IN INTERNATIONAL PRODUCT PRICES	20.087	23.965	529.393	462.902	564.489
- MOVEMENT IN EXCHANGE RATE	11.627	11.518	13.633	14.269	14.038
AVERAGE UNIT OVER/(UNDER) RECOVERY 30/04/2026 - 27/05/2026	31.714	35.483	543.026	477.171	578.527

R/\$ EXCHANGE RATE - (R/\$16.3433 - 27/05/2026)

EXCHANGE RATE USED IN BASIC FUEL PRICE



INTERNATIONAL PRODUCT PRICES OF BASKET USED IN BASIC FUEL PRICE



BASIC FUEL PRICE IN SA CENTS PER LITRE

