

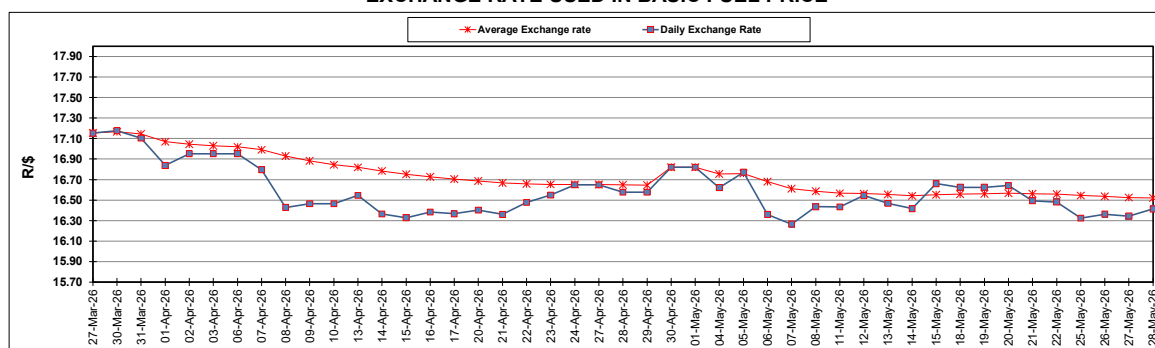
South African Cents per Litre (SA c/l)	PETROL 95 ULP	PETROL 93 ULP & LRP	DIESEL 0.05%	DIESEL 0.005%	ILL. PAR.
GAUTENG PUMP PRICE AS FROM 06/05/2026	2,663.000	2,652.000	-	-	-
WHOLESALE PRICE AS FROM 06/05/2026	-	-	3,117.530	3,137.930	2,843.098
SINGLE NATIONAL MAXIMUM RETAIL PRICE AS FROM 06/05/2026	-	-	-	-	3,710.000
BASIC FUEL PRICE - 28/05/2026	1,393.363	1,386.863	1,665.262	1,694.741	1,615.225
PRESS RELEASE CONTRIBUTION TO BFP 06/05/2026 - 28/05/2026	1,651.370	1,640.370	2,493.630	2,514.030	2,569.128
UNIT OVER/(UNDER) RECOVERY - 28/05/2026	258.007	253.507	828.368	819.289	953.903
AVERAGE BASIC FUEL PRICE 30/04/2026 - 28/05/2026	1,569.965	1,555.591	1,842.350	1,925.901	1,892.345
AVERAGE UNIT OVER/(UNDER) RECOVERY 30/04/2026 - 28/05/2026	42.491	45.865	556.613	493.462	596.402

ANALYSIS MOVEMENT OF AVERAGE OVER/(UNDER) RECOVERY

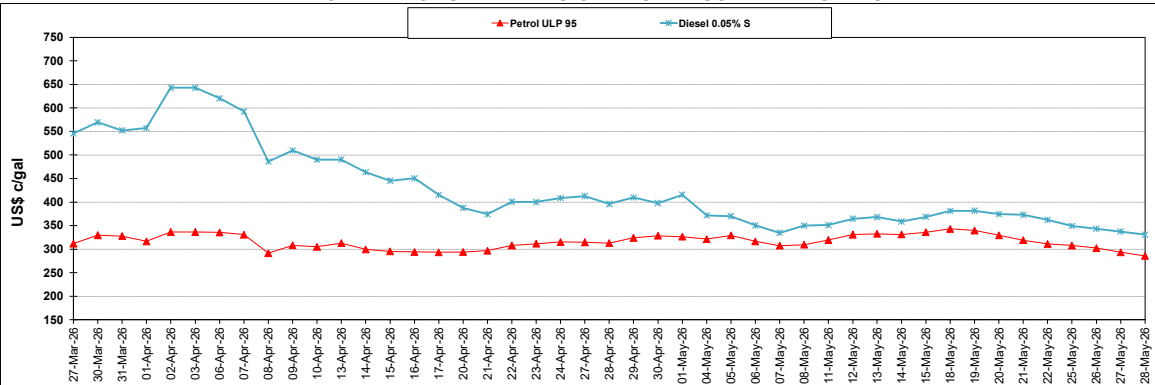
	PETROL 95	PETROL 93	DIESEL 0.05%	DIESEL 0.005%	ILL. PAR.
- MOVEMENT IN INTERNATIONAL PRODUCT PRICES	30.421	33.906	542.449	478.656	581.854
- MOVEMENT IN EXCHANGE RATE	12.070	11.959	14.164	14.806	14.548
AVERAGE UNIT OVER/(UNDER) RECOVERY 30/04/2026 - 28/05/2026	42.491	45.865	556.613	493.462	596.402

R/\$ EXCHANGE RATE - (R/\$16.4130 - 28/05/2026)

EXCHANGE RATE USED IN BASIC FUEL PRICE



INTERNATIONAL PRODUCT PRICES OF BASKET USED IN BASIC FUEL PRICE



BASIC FUEL PRICE IN SA CENTS PER LITRE

