

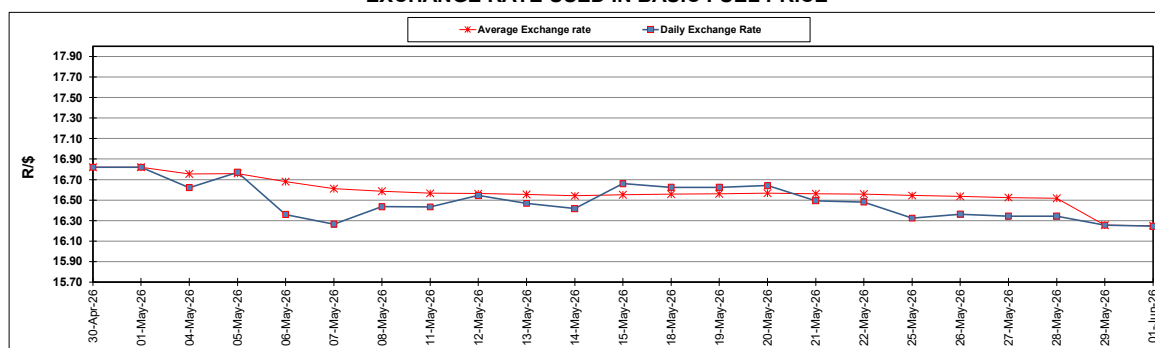
South African Cents per Litre (SA c/l)	PETROL 95 ULP	PETROL 93 ULP & LRP	DIESEL 0.05%	DIESEL 0.005%	ILL. PAR.
GAUTENG PUMP PRICE AS FROM 03/06/2026	2,806.000	2,795.000	-	-	-
WHOLESALE PRICE AS FROM 03/06/2026	-	-	2,792.570	2,875.970	2,247.098
SINGLE NATIONAL MAXIMUM RETAIL PRICE AS FROM 03/06/2026	-	-	-	-	2,915.000
BASIC FUEL PRICE - 01/06/2026	1,373.770	1,367.320	1,673.951	1,704.855	1,614.113
PRESS RELEASE CONTRIBUTION TO BFP 29/05/2026 - 01/06/2026	1,651.370	1,640.370	2,493.630	2,514.030	2,569.128
UNIT OVER/(UNDER) RECOVERY - 01/06/2026	277.600	273.050	819.679	809.175	955.015
AVERAGE BASIC FUEL PRICE 29/05/2026 - 01/06/2026	1,361.442	1,354.998	1,646.872	1,677.664	1,586.077
AVERAGE UNIT OVER/(UNDER) RECOVERY 29/05/2026 - 01/06/2026	289.928	285.372	846.758	836.366	983.051

ANALYSIS MOVEMENT OF AVERAGE OVER/(UNDER) RECOVERY

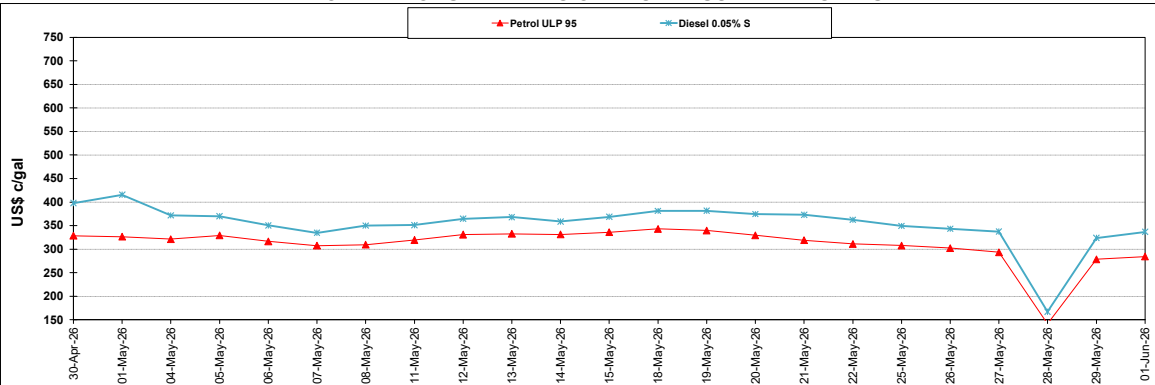
	PETROL 95	PETROL 93	DIESEL 0.05%	DIESEL 0.005%	ILL. PAR.
- MOVEMENT IN INTERNATIONAL PRODUCT PRICES	267.307	262.858	819.394	808.490	956.697
- MOVEMENT IN EXCHANGE RATE	22.621	22.514	27.364	27.876	26.354
AVERAGE UNIT OVER/(UNDER) RECOVERY 29/05/2026 - 01/06/2026	289.928	285.372	846.758	836.366	983.051

R/\$ EXCHANGE RATE - (R/\$16.2440 - 01/06/2026)

EXCHANGE RATE USED IN BASIC FUEL PRICE



INTERNATIONAL PRODUCT PRICES OF BASKET USED IN BASIC FUEL PRICE



BASIC FUEL PRICE IN SA CENTS PER LITRE

