

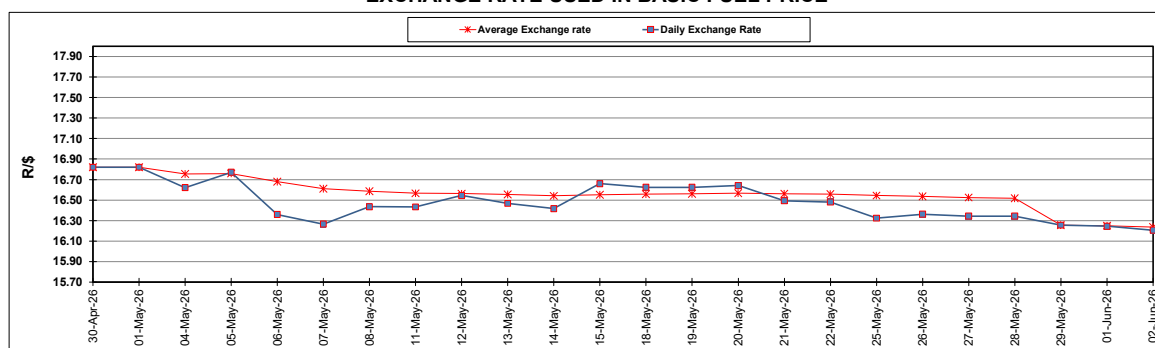
South African Cents per Litre (SA c/l)	PETROL 95 ULP	PETROL 93 ULP & LRP	DIESEL 0.05%	DIESEL 0.005%	ILL. PAR.
GAUTENG PUMP PRICE AS FROM 03/06/2026	2,806.000	2,795.000	-	-	-
WHOLESALE PRICE AS FROM 03/06/2026	-	-	2,792.570	2,875.970	2,247.098
SINGLE NATIONAL MAXIMUM RETAIL PRICE AS FROM 03/06/2026	-	-	-	-	2,915.000
BASIC FUEL PRICE - 02/06/2026	1,358.533	1,352.785	1,695.778	1,727.069	1,648.926
PRESS RELEASE CONTRIBUTION TO BFP 29/05/2026 - 02/06/2026	1,651.370	1,640.370	2,493.630	2,514.030	2,569.128
UNIT OVER/(UNDER) RECOVERY - 02/06/2026	292.837	287.585	797.852	786.961	920.202
AVERAGE BASIC FUEL PRICE 29/05/2026 - 02/06/2026	1,360.472	1,354.260	1,663.174	1,694.132	1,607.026
AVERAGE UNIT OVER/(UNDER) RECOVERY 29/05/2026 - 02/06/2026	290.898	286.110	830.456	819.898	962.102

### ANALYSIS MOVEMENT OF AVERAGE OVER/(UNDER) RECOVERY

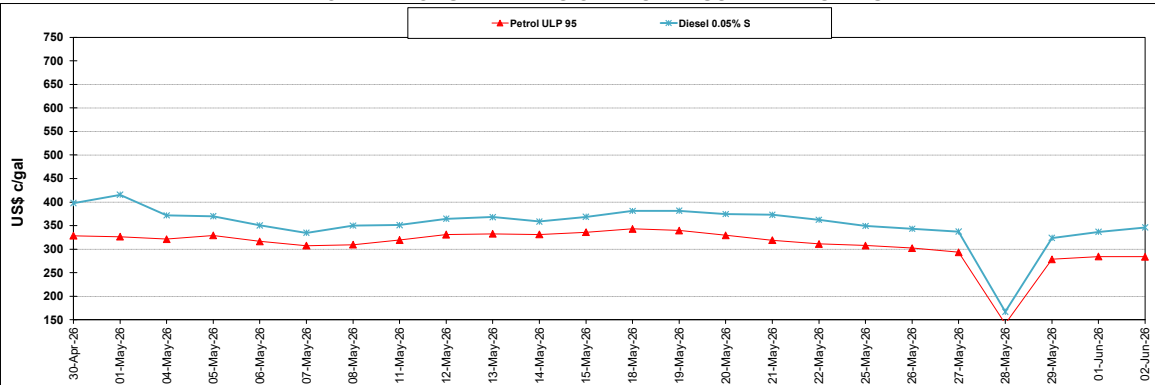
	PETROL 95	PETROL 93	DIESEL 0.05%	DIESEL 0.005%	ILL. PAR.
- MOVEMENT IN INTERNATIONAL PRODUCT PRICES	267.066	262.387	801.322	790.221	933.951
- MOVEMENT IN EXCHANGE RATE	23.832	23.723	29.134	29.677	28.151
AVERAGE UNIT OVER/(UNDER) RECOVERY 29/05/2026 - 02/06/2026	290.898	286.110	830.456	819.898	962.102

R/\$ EXCHANGE RATE - (R/\$16.2065 - 02/06/2026)

### EXCHANGE RATE USED IN BASIC FUEL PRICE



### INTERNATIONAL PRODUCT PRICES OF BASKET USED IN BASIC FUEL PRICE



### BASIC FUEL PRICE IN SA CENTS PER LITRE

