

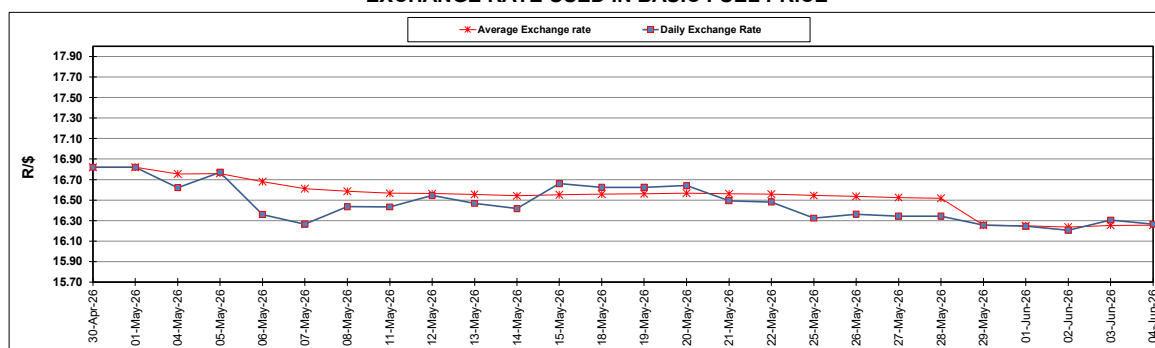
South African Cents per Litre (SA c/l)	PETROL 95 ULP	PETROL 93 ULP & LRP	DIESEL 0.05%	DIESEL 0.005%	ILL. PAR.
GAUTENG PUMP PRICE AS FROM 03/06/2026	2,806.000	2,795.000	-	-	-
WHOLESALE PRICE AS FROM 03/06/2026	-	-	2,792.570	2,875.970	2,247.098
SINGLE NATIONAL MAXIMUM RETAIL PRICE AS FROM 03/06/2026	-	-	-	-	2,915.000
BASIC FUEL PRICE - 04/06/2026	1,349.112	1,337.397	1,722.127	1,762.353	1,708.259
PRESS RELEASE CONTRIBUTION TO BFP 03/06/2026 - 04/06/2026	1,609.330	1,598.330	1,937.630	2,021.030	1,973.128
UNIT OVER/(UNDER) RECOVERY - 04/06/2026	260.218	260.933	215.503	258.677	264.869
AVERAGE BASIC FUEL PRICE 29/05/2026 - 04/06/2026	1,364.019	1,355.597	1,698.297	1,732.719	1,655.132
AVERAGE UNIT OVER/(UNDER) RECOVERY 29/05/2026 - 04/06/2026	270.535	267.957	572.933	584.111	675.596

ANALYSIS MOVEMENT OF AVERAGE OVER/(UNDER) RECOVERY

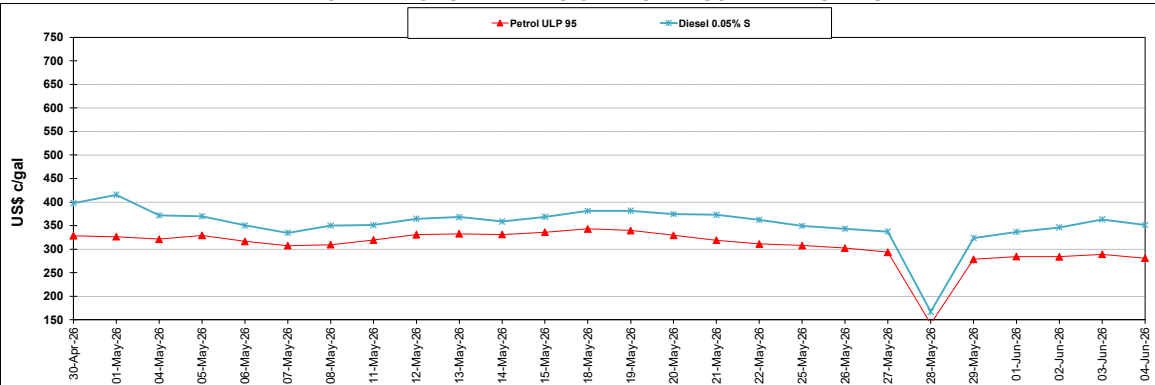
	PETROL 95	PETROL 93	DIESEL 0.05%	DIESEL 0.005%	ILL. PAR.
- MOVEMENT IN INTERNATIONAL PRODUCT PRICES	248.314	245.874	545.267	555.884	648.633
- MOVEMENT IN EXCHANGE RATE	22.221	22.083	27.666	28.227	26.963
AVERAGE UNIT OVER/(UNDER) RECOVERY 29/05/2026 - 04/06/2026	270.535	267.957	572.933	584.111	675.596

R/\$ EXCHANGE RATE - (R/\$16.2638 - 04/06/2026)

EXCHANGE RATE USED IN BASIC FUEL PRICE



INTERNATIONAL PRODUCT PRICES OF BASKET USED IN BASIC FUEL PRICE



BASIC FUEL PRICE IN SA CENTS PER LITRE

