

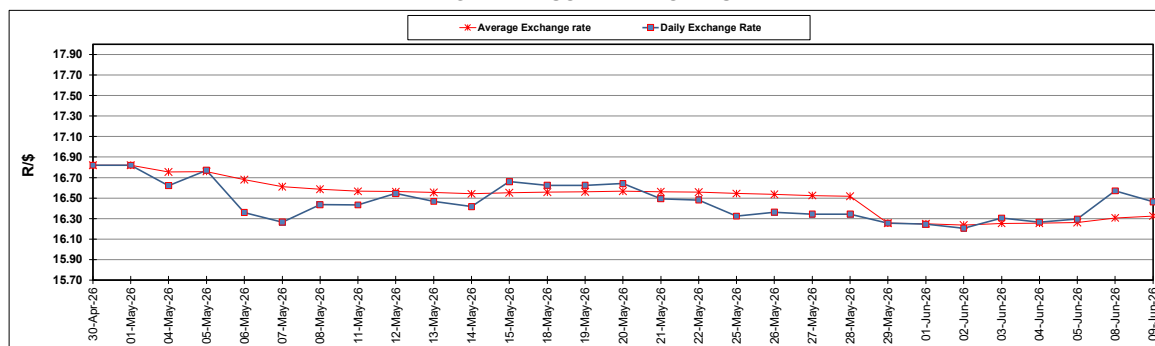
South African Cents per Litre (SA c/l)	PETROL 95 ULP	PETROL 93 ULP & LRP	DIESEL 0.05%	DIESEL 0.005%	ILL. PAR.
GAUTENG PUMP PRICE AS FROM 03/06/2026	2,806.000	2,795.000	-	-	-
WHOLESALE PRICE AS FROM 03/06/2026	-	-	2,792.570	2,875.970	2,247.098
SINGLE NATIONAL MAXIMUM RETAIL PRICE AS FROM 03/06/2026	-	-	-	-	2,915.000
BASIC FUEL PRICE - 09/06/2026	1,366.819	1,347.608	1,630.640	1,669.295	1,656.768
PRESS RELEASE CONTRIBUTION TO BFP 03/06/2026 - 09/06/2026	1,609.330	1,598.330	1,937.630	2,021.030	1,973.128
UNIT OVER/(UNDER) RECOVERY - 09/06/2026	242.511	250.722	306.990	351.735	316.360
AVERAGE BASIC FUEL PRICE 29/05/2026 - 09/06/2026	1,367.045	1,355.493	1,685.478	1,722.104	1,666.587
AVERAGE UNIT OVER/(UNDER) RECOVERY 29/05/2026 - 09/06/2026	258.050	258.602	460.652	483.801	530.041

ANALYSIS MOVEMENT OF AVERAGE OVER/(UNDER) RECOVERY

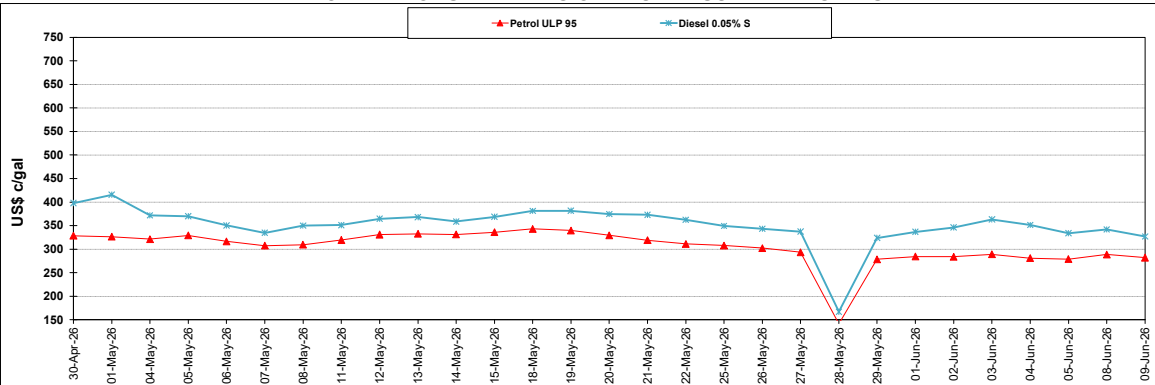
	PETROL 95	PETROL 93	DIESEL 0.05%	DIESEL 0.005%	ILL. PAR.
- MOVEMENT IN INTERNATIONAL PRODUCT PRICES	241.763	242.453	440.571	463.284	510.185
- MOVEMENT IN EXCHANGE RATE	16.287	16.149	20.081	20.517	19.856
AVERAGE UNIT OVER/(UNDER) RECOVERY 29/05/2026 - 09/06/2026	258.050	258.602	460.652	483.801	530.041

R/\$ EXCHANGE RATE - (R/\$16.4625 - 09/06/2026)

EXCHANGE RATE USED IN BASIC FUEL PRICE



INTERNATIONAL PRODUCT PRICES OF BASKET USED IN BASIC FUEL PRICE



BASIC FUEL PRICE IN SA CENTS PER LITRE

