

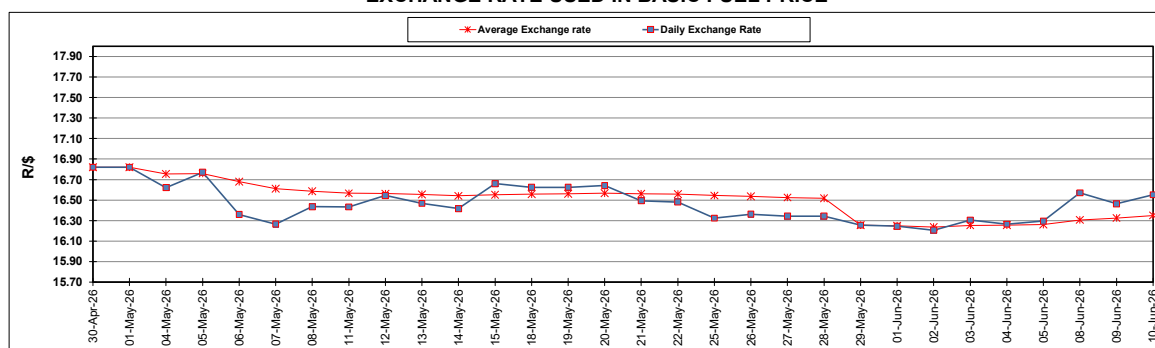
South African Cents per Litre (SA c/l)	PETROL 95 ULP	PETROL 93 ULP & LRP	DIESEL 0.05%	DIESEL 0.005%	ILL. PAR.
GAUTENG PUMP PRICE AS FROM 03/06/2026	2,806.000	2,795.000	-	-	-
WHOLESALE PRICE AS FROM 03/06/2026	-	-	2,792.570	2,875.970	2,247.098
SINGLE NATIONAL MAXIMUM RETAIL PRICE AS FROM 03/06/2026	-	-	-	-	2,915.000
BASIC FUEL PRICE - 10/06/2026	1,379.832	1,360.502	1,643.895	1,675.765	1,656.884
PRESS RELEASE CONTRIBUTION TO BFP 03/06/2026 - 10/06/2026	1,609.330	1,598.330	1,937.630	2,021.030	1,973.128
UNIT OVER/(UNDER) RECOVERY - 10/06/2026	229.498	237.828	293.735	345.265	316.244
AVERAGE BASIC FUEL PRICE 29/05/2026 - 10/06/2026	1,368.465	1,356.049	1,680.858	1,716.955	1,665.508
AVERAGE UNIT OVER/(UNDER) RECOVERY 29/05/2026 - 10/06/2026	254.878	256.294	442.105	468.408	506.287

ANALYSIS MOVEMENT OF AVERAGE OVER/(UNDER) RECOVERY

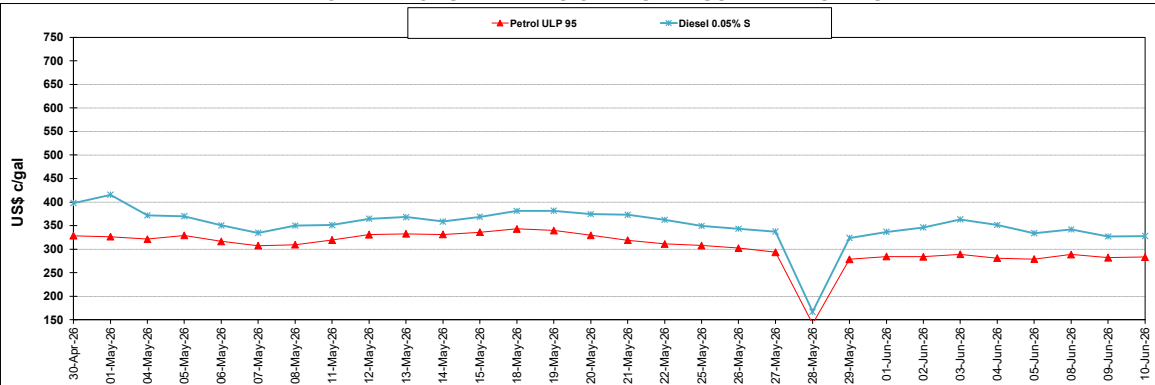
	PETROL 95	PETROL 93	DIESEL 0.05%	DIESEL 0.005%	ILL. PAR.
- MOVEMENT IN INTERNATIONAL PRODUCT PRICES	240.691	242.236	424.680	450.609	489.021
- MOVEMENT IN EXCHANGE RATE	14.187	14.058	17.425	17.799	17.266
AVERAGE UNIT OVER/(UNDER) RECOVERY 29/05/2026 - 10/06/2026	254.878	256.294	442.105	468.408	506.287

R/\$ EXCHANGE RATE - (R/\$16.5505 - 10/06/2026)

EXCHANGE RATE USED IN BASIC FUEL PRICE



INTERNATIONAL PRODUCT PRICES OF BASKET USED IN BASIC FUEL PRICE



BASIC FUEL PRICE IN SA CENTS PER LITRE

