

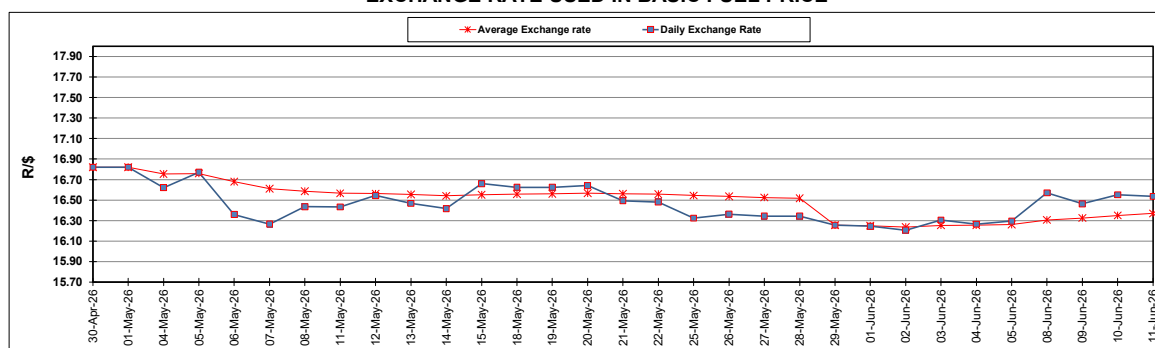
South African Cents per Litre (SA c/l)	PETROL 95 ULP	PETROL 93 ULP & LRP	DIESEL 0.05%	DIESEL 0.005%	ILL. PAR.
GAUTENG PUMP PRICE AS FROM 03/06/2026	2,806.000	2,795.000	-	-	-
WHOLESALE PRICE AS FROM 03/06/2026	-	-	2,792.570	2,875.970	2,247.098
SINGLE NATIONAL MAXIMUM RETAIL PRICE AS FROM 03/06/2026	-	-	-	-	2,915.000
BASIC FUEL PRICE - 11/06/2026	1,387.827	1,368.514	1,641.465	1,669.967	1,645.681
PRESS RELEASE CONTRIBUTION TO BFP 03/06/2026 - 11/06/2026	1,609.330	1,598.330	1,937.630	2,021.030	1,973.128
UNIT OVER/(UNDER) RECOVERY - 11/06/2026	221.503	229.816	296.165	351.063	327.447
AVERAGE BASIC FUEL PRICE 29/05/2026 - 11/06/2026	1,370.402	1,357.296	1,676.918	1,712.257	1,663.526
AVERAGE UNIT OVER/(UNDER) RECOVERY 29/05/2026 - 11/06/2026	251.540	253.646	427.512	456.673	488.402

ANALYSIS MOVEMENT OF AVERAGE OVER/(UNDER) RECOVERY

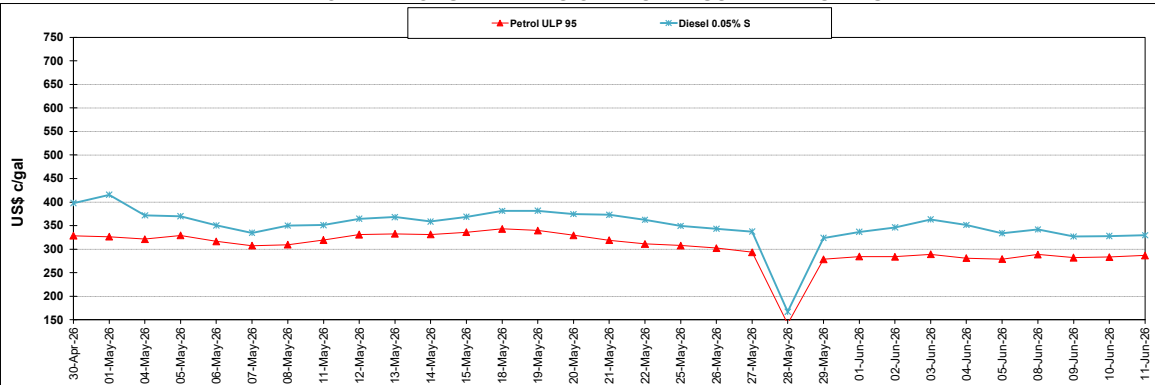
	PETROL 95	PETROL 93	DIESEL 0.05%	DIESEL 0.005%	ILL. PAR.
- MOVEMENT IN INTERNATIONAL PRODUCT PRICES	238.898	241.125	412.043	440.878	473.056
- MOVEMENT IN EXCHANGE RATE	12.642	12.521	15.469	15.795	15.346
AVERAGE UNIT OVER/(UNDER) RECOVERY 29/05/2026 - 11/06/2026	251.540	253.646	427.512	456.673	488.402

R/\$ EXCHANGE RATE - (R/\$16.5355 - 11/06/2026)

EXCHANGE RATE USED IN BASIC FUEL PRICE



INTERNATIONAL PRODUCT PRICES OF BASKET USED IN BASIC FUEL PRICE



BASIC FUEL PRICE IN SA CENTS PER LITRE

