

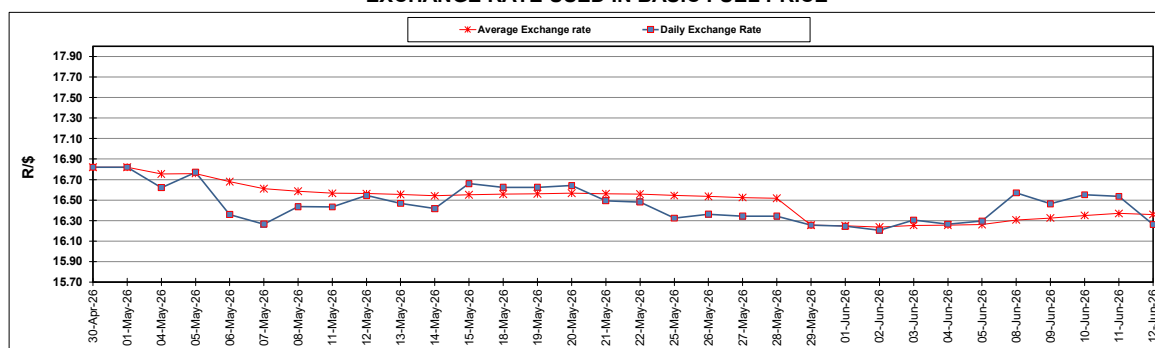
South African Cents per Litre (SA c/l)	PETROL 95 ULP	PETROL 93 ULP & LRP	DIESEL 0.05%	DIESEL 0.005%	ILL. PAR.
GAUTENG PUMP PRICE AS FROM 03/06/2026	2,806.000	2,795.000	-	-	-
WHOLESALE PRICE AS FROM 03/06/2026	-	-	2,792.570	2,875.970	2,247.098
SINGLE NATIONAL MAXIMUM RETAIL PRICE AS FROM 03/06/2026	-	-	-	-	2,915.000
BASIC FUEL PRICE - 12/06/2026	1,300.186	1,279.338	1,507.841	1,535.476	1,502.605
PRESS RELEASE CONTRIBUTION TO BFP 03/06/2026 - 12/06/2026	1,609.330	1,598.330	1,937.630	2,021.030	1,973.128
UNIT OVER/(UNDER) RECOVERY - 12/06/2026	309.144	318.992	429.789	485.554	470.523
AVERAGE BASIC FUEL PRICE 29/05/2026 - 12/06/2026	1,364.018	1,350.209	1,661.548	1,696.186	1,648.897
AVERAGE UNIT OVER/(UNDER) RECOVERY 29/05/2026 - 12/06/2026	256.777	259.586	427.718	459.299	486.776

ANALYSIS MOVEMENT OF AVERAGE OVER/(UNDER) RECOVERY

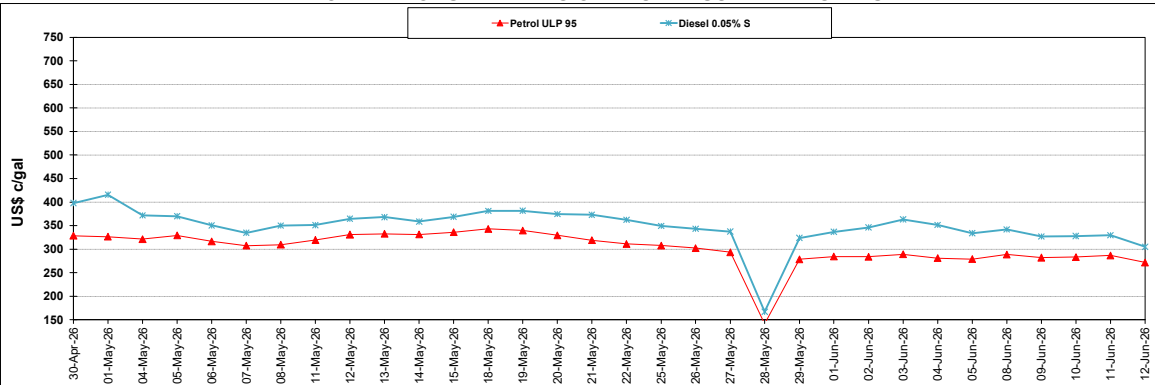
	PETROL 95	PETROL 93	DIESEL 0.05%	DIESEL 0.005%	ILL. PAR.
- MOVEMENT IN INTERNATIONAL PRODUCT PRICES	243.378	246.322	411.396	442.637	470.578
- MOVEMENT IN EXCHANGE RATE	13.399	13.264	16.322	16.662	16.198
AVERAGE UNIT OVER/(UNDER) RECOVERY 29/05/2026 - 12/06/2026	256.777	259.586	427.718	459.299	486.776

R/\$ EXCHANGE RATE - (R/\$16.2615 - 12/06/2026)

EXCHANGE RATE USED IN BASIC FUEL PRICE



INTERNATIONAL PRODUCT PRICES OF BASKET USED IN BASIC FUEL PRICE



BASIC FUEL PRICE IN SA CENTS PER LITRE

