

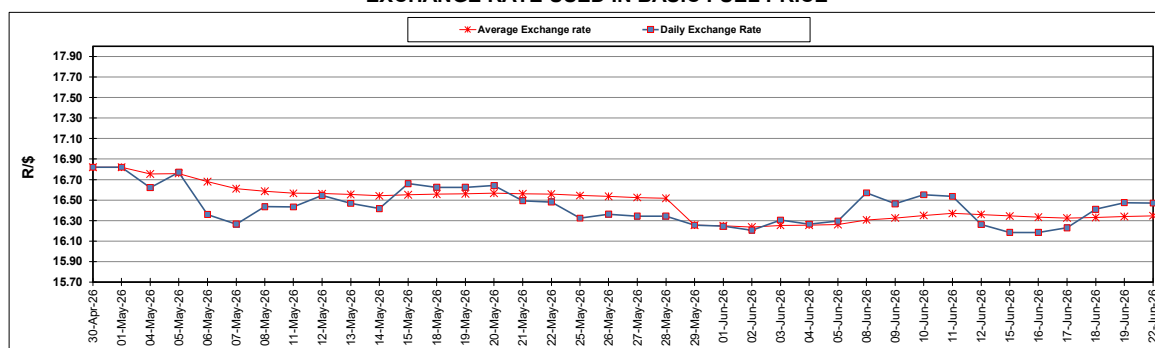
South African Cents per Litre (SA c/l)	PETROL 95 ULP	PETROL 93 ULP & LRP	DIESEL 0.05%	DIESEL 0.005%	ILL. PAR.
GAUTENG PUMP PRICE AS FROM 03/06/2026	2,806.000	2,795.000	-	-	-
WHOLESALE PRICE AS FROM 03/06/2026	-	-	2,792.570	2,875.970	2,247.098
SINGLE NATIONAL MAXIMUM RETAIL PRICE AS FROM 03/06/2026	-	-	-	-	2,915.000
BASIC FUEL PRICE - 22/06/2026	1,265.822	1,252.078	1,423.212	1,443.781	1,403.585
PRESS RELEASE CONTRIBUTION TO BFP 03/06/2026 - 22/06/2026	1,609.330	1,598.330	1,937.630	2,021.030	1,973.128
UNIT OVER/(UNDER) RECOVERY - 22/06/2026	343.508	346.252	514.418	577.249	569.543
AVERAGE BASIC FUEL PRICE 29/05/2026 - 22/06/2026	1,323.799	1,308.345	1,575.348	1,606.319	1,562.354
AVERAGE UNIT OVER/(UNDER) RECOVERY 29/05/2026 - 22/06/2026	292.950	297.404	460.400	501.711	515.950

### ANALYSIS MOVEMENT OF AVERAGE OVER/(UNDER) RECOVERY

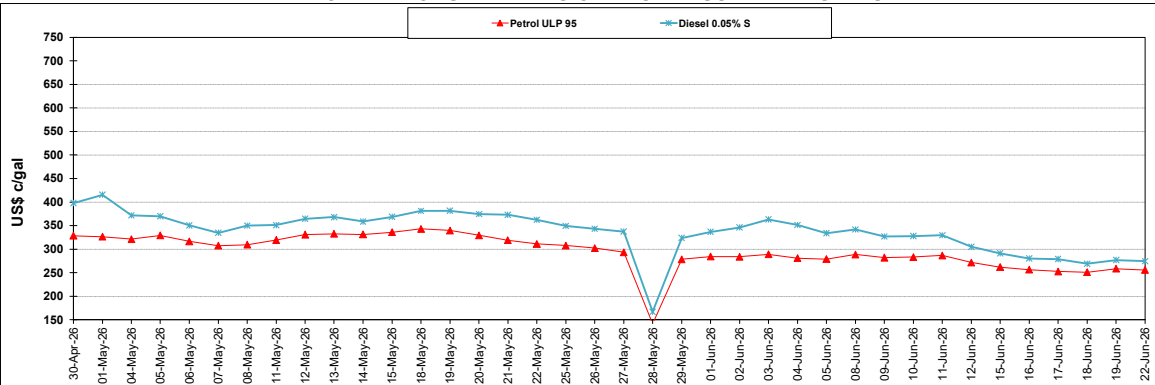
	PETROL 95	PETROL 93	DIESEL 0.05%	DIESEL 0.005%	ILL. PAR.
- MOVEMENT IN INTERNATIONAL PRODUCT PRICES	278.973	283.590	443.767	484.751	499.454
- MOVEMENT IN EXCHANGE RATE	13.977	13.814	16.633	16.960	16.496
AVERAGE UNIT OVER/(UNDER) RECOVERY 29/05/2026 - 22/06/2026	292.950	297.404	460.400	501.711	515.950

**R/\$ EXCHANGE RATE - (R/\$16.4700 - 22/06/2026)**

### EXCHANGE RATE USED IN BASIC FUEL PRICE



### INTERNATIONAL PRODUCT PRICES OF BASKET USED IN BASIC FUEL PRICE



### BASIC FUEL PRICE IN SA CENTS PER LITRE

