

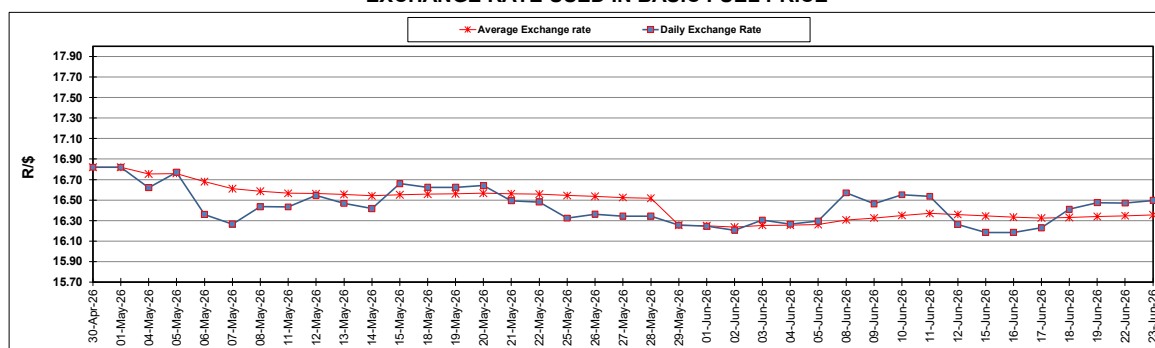
South African Cents per Litre (SA c/l)	PETROL 95 ULP	PETROL 93 ULP & LRP	DIESEL 0.05%	DIESEL 0.005%	ILL. PAR.
GAUTENG PUMP PRICE AS FROM 03/06/2026	2,806.000	2,795.000	-	-	-
WHOLESALE PRICE AS FROM 03/06/2026	-	-	2,792.570	2,875.970	2,247.098
SINGLE NATIONAL MAXIMUM RETAIL PRICE AS FROM 03/06/2026	-	-	-	-	2,915.000
BASIC FUEL PRICE - 23/06/2026	1,249.346	1,235.578	1,410.641	1,431.060	1,392.052
PRESS RELEASE CONTRIBUTION TO BFP 03/06/2026 - 23/06/2026	1,609.330	1,598.330	1,937.630	2,021.030	1,973.128
UNIT OVER/(UNDER) RECOVERY - 23/06/2026	359.984	362.752	526.989	589.970	581.076
AVERAGE BASIC FUEL PRICE 29/05/2026 - 23/06/2026	1,319.662	1,304.302	1,566.198	1,596.582	1,552.892
AVERAGE UNIT OVER/(UNDER) RECOVERY 29/05/2026 - 23/06/2026	296.674	301.034	464.100	506.614	519.568

ANALYSIS MOVEMENT OF AVERAGE OVER/(UNDER) RECOVERY

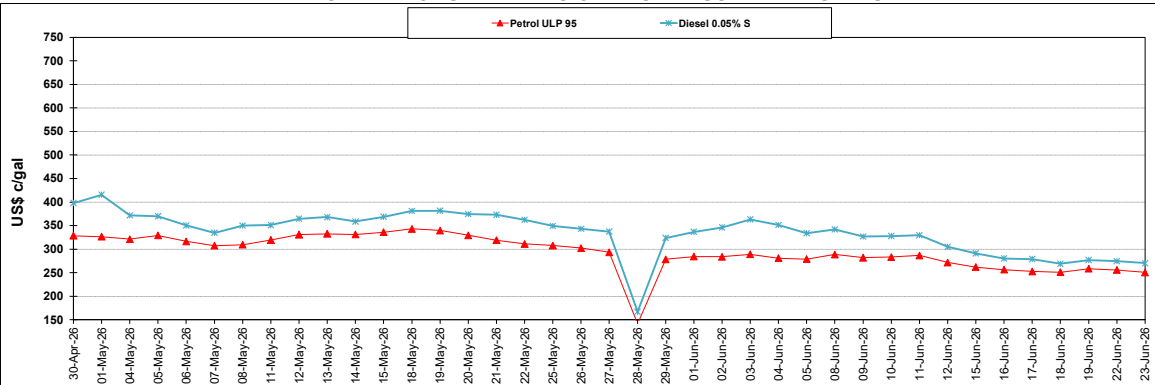
	PETROL 95	PETROL 93	DIESEL 0.05%	DIESEL 0.005%	ILL. PAR.
- MOVEMENT IN INTERNATIONAL PRODUCT PRICES	283.418	287.932	448.366	490.576	503.969
- MOVEMENT IN EXCHANGE RATE	13.257	13.103	15.733	16.039	15.600
AVERAGE UNIT OVER/(UNDER) RECOVERY 29/05/2026 - 23/06/2026	296.675	301.035	464.099	506.615	519.569

R/\$ EXCHANGE RATE - (R/\$16.4970 - 23/06/2026)

EXCHANGE RATE USED IN BASIC FUEL PRICE



INTERNATIONAL PRODUCT PRICES OF BASKET USED IN BASIC FUEL PRICE



BASIC FUEL PRICE IN SA CENTS PER LITRE

