

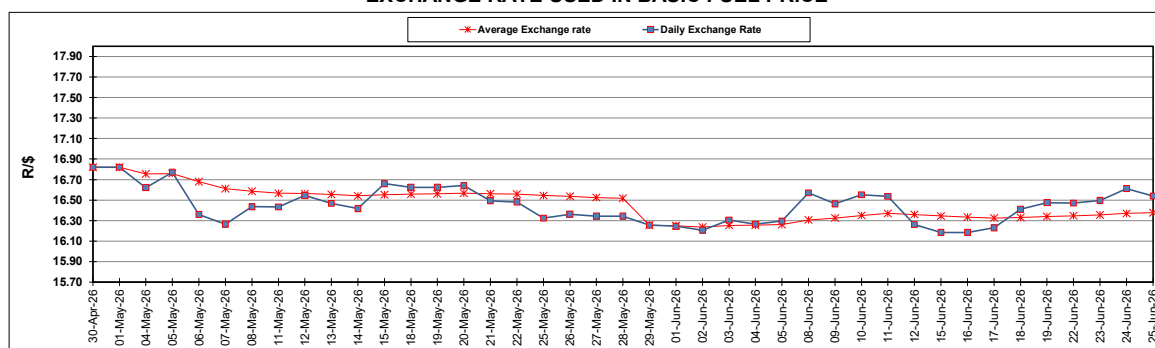
South African Cents per Litre (SA c/l)	PETROL 95 ULP	PETROL 93 ULP & LRP	DIESEL 0.05%	DIESEL 0.005%	ILL. PAR.
GAUTENG PUMP PRICE AS FROM 03/06/2026	2,806.000	2,795.000	-	-	-
WHOLESALE PRICE AS FROM 03/06/2026	-	-	2,792.570	2,875.970	2,247.098
SINGLE NATIONAL MAXIMUM RETAIL PRICE AS FROM 03/06/2026	-	-	-	-	2,915.000
BASIC FUEL PRICE - 25/06/2026	1,253.471	1,239.669	1,446.236	1,467.272	1,414.936
PRESS RELEASE CONTRIBUTION TO BFP 03/06/2026 - 25/06/2026	1,609.330	1,598.330	1,937.630	2,021.030	1,973.128
UNIT OVER/(UNDER) RECOVERY - 25/06/2026	355.859	358.661	491.394	553.758	558.192
AVERAGE BASIC FUEL PRICE 29/05/2026 - 25/06/2026	1,312.601	1,297.394	1,553.395	1,582.761	1,538.649
AVERAGE UNIT OVER/(UNDER) RECOVERY 29/05/2026 - 25/06/2026	303.035	307.242	467.635	512.219	523.879

ANALYSIS MOVEMENT OF AVERAGE OVER/(UNDER) RECOVERY

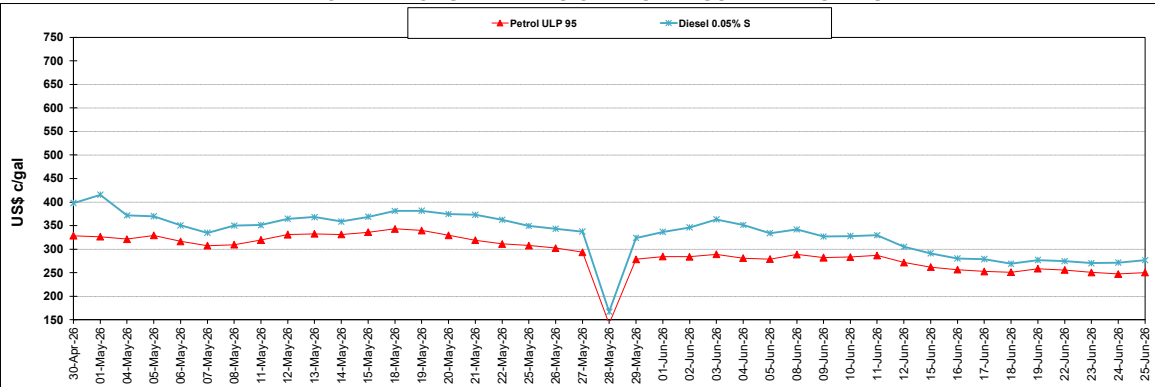
	PETROL 95	PETROL 93	DIESEL 0.05%	DIESEL 0.005%	ILL. PAR.
- MOVEMENT IN INTERNATIONAL PRODUCT PRICES	291.630	295.969	454.138	498.467	510.510
- MOVEMENT IN EXCHANGE RATE	11.405	11.273	13.497	13.752	13.369
AVERAGE UNIT OVER/(UNDER) RECOVERY 29/05/2026 - 25/06/2026	303.035	307.242	467.635	512.219	523.879

R/\$ EXCHANGE RATE - (R/\$16.5390 - 25/06/2026)

EXCHANGE RATE USED IN BASIC FUEL PRICE



INTERNATIONAL PRODUCT PRICES OF BASKET USED IN BASIC FUEL PRICE



BASIC FUEL PRICE IN SA CENTS PER LITRE

