

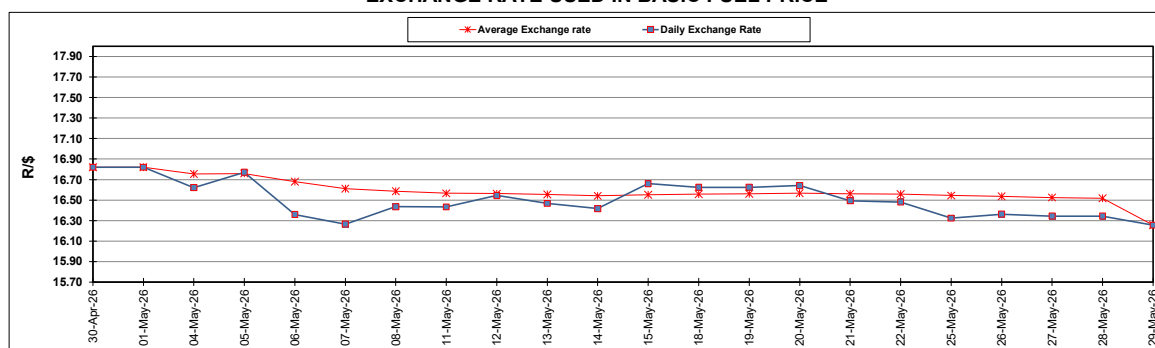
South African Cents per Litre (SA c/l)	PETROL 95 ULP	PETROL 93 ULP & LRP	DIESEL 0.05%	DIESEL 0.005%	ILL. PAR.
GAUTENG PUMP PRICE AS FROM 03/06/2026	2,806.000	2,795.000	-	-	-
WHOLESALE PRICE AS FROM 03/06/2026	-	-	2,792.570	2,875.970	2,247.098
SINGLE NATIONAL MAXIMUM RETAIL PRICE AS FROM 03/06/2026	-	-	-	-	2,915.000
BASIC FUEL PRICE - 29/05/2026	1,349.113	1,342.675	1,619.793	1,650.472	1,558.040
PRESS RELEASE CONTRIBUTION TO BFP 29/05/2026 - 29/05/2026	1,651.370	1,640.370	2,493.630	2,514.030	2,569.128
UNIT OVER/(UNDER) RECOVERY - 29/05/2026	302.257	297.695	873.837	863.558	1,011.088
AVERAGE BASIC FUEL PRICE 29/05/2026 - 29/05/2026	1,349.113	1,342.675	1,619.793	1,650.472	1,558.040
AVERAGE UNIT OVER/(UNDER) RECOVERY 29/05/2026 - 29/05/2026	302.257	297.695	873.837	863.558	1,011.088

ANALYSIS MOVEMENT OF AVERAGE OVER/(UNDER) RECOVERY

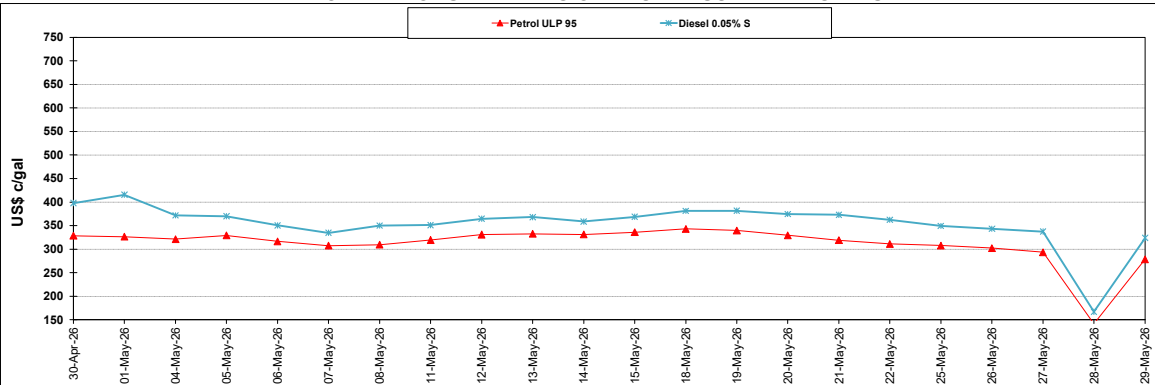
	PETROL 95	PETROL 93	DIESEL 0.05%	DIESEL 0.005%	ILL. PAR.
- MOVEMENT IN INTERNATIONAL PRODUCT PRICES	280.313	275.856	847.490	836.712	985.746
- MOVEMENT IN EXCHANGE RATE	21.944	21.839	26.347	26.846	25.342
AVERAGE UNIT OVER/(UNDER) RECOVERY 29/05/2026 - 29/05/2026	302.257	297.695	873.837	863.558	1,011.088

R/\$ EXCHANGE RATE - (R/\$16.2553 - 29/05/2026)

EXCHANGE RATE USED IN BASIC FUEL PRICE



INTERNATIONAL PRODUCT PRICES OF BASKET USED IN BASIC FUEL PRICE



BASIC FUEL PRICE IN SA CENTS PER LITRE

